

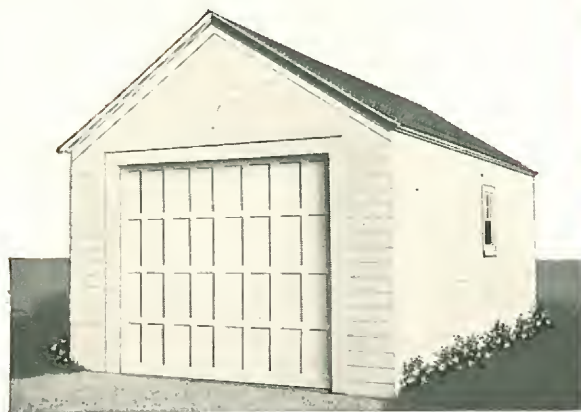


A Colorful and Efficient ALADDIN Kitchen

ALADDIN ^{READI-CUT} GARAGES

Aladdin garages are made of only the best materials and when completed are sure to please the most critical person. The lumber is entirely cut-to-fit, making erection a short and easy task. Detailed drawings show where each piece of lumber is to be placed and nailed. Aladdin offers the perfect system of buying and building garages. Safe delivery and no shortages guaranteed.

Specifications: Materials of the same high quality as used in Aladdin houses. Sills 4" x 4", studding 2" x 4" on 24-inch centers. Drop siding for side walls, 2" x 4" rafters on 24-inch centers, roof sheathing laid tight. Best quality green, slate-surfaced, roll roofing. Slate surfaced asphalt strip shingles can be had in place of roll roofing at prices quoted. See Price List. Doors, eight feet wide and seven feet high. Windows furnished when shown in illustration are swinging casements. Hardware for doors and windows, nails and two coats of paint for exterior. Materials Readi-Cut. Drawings and instructions for building. All garages furnished without floors as most owners prefer to build floors of cinders or concrete. Prices given on enclosed Price List.

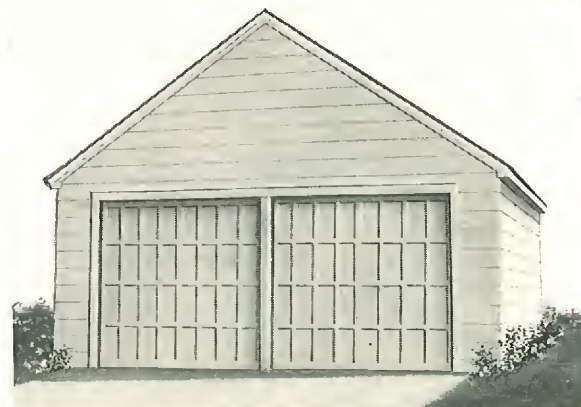


THE MERCURY ONE CAR

No. 1, 12 ft. wide, 18 ft. deep.
No. 2, 12 ft. wide, 20 ft. deep.



Color Lends Charm to ALADDIN Bath Rooms



THE MERCURY TWO CAR

No. 3, 18 ft. wide, 20 ft. deep.
No. 4, 20 ft. wide, 20 ft. deep.

INDEX

House	Page	House	Page	House	Page
Birchwood.....	22	Ferndale.....	9	Pilgrim.....	10
Brentwood.....	12	Gables.....	4	Potomac.....	29
Brewster.....	19	Garages.....	35	Rockport.....	23
Bristol.....	15	Hamilton.....	3	Rosewood.....	13
Brockton.....	24	Madison.....	26	Shelburne.....	5
Cameo.....	27	Mt. Vernon.....	11	Summerset.....	20
Colonial.....	22	Newport.....	2	Sunshine.....	6
Columbia.....	28	Norfolk.....	17	Vassar.....	11
Concord.....	7	Palm Springs.....	8	Winston.....	16
Dresden.....	21	Parkway.....	18		

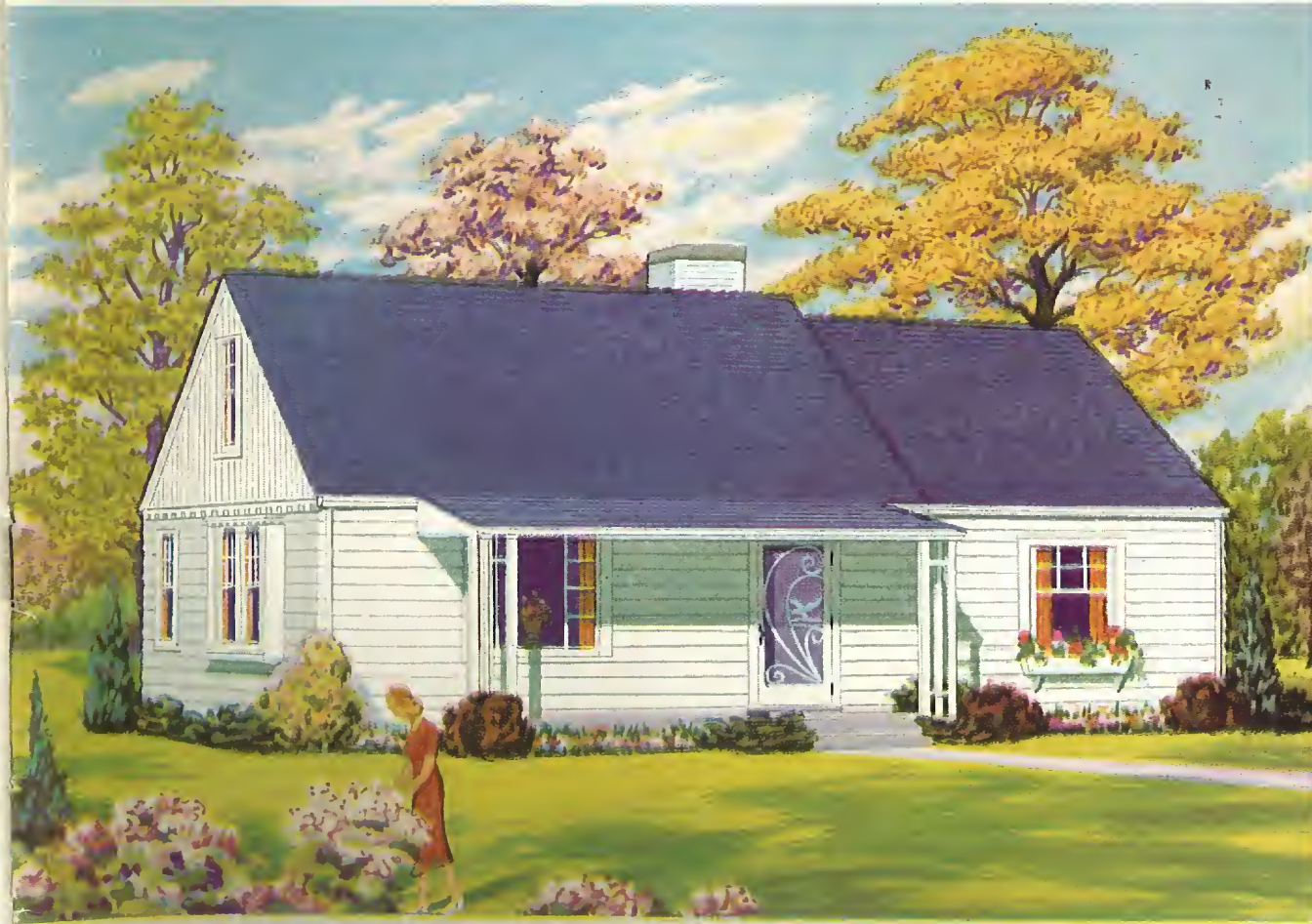


Sold By The
**GOLDEN
RULE**

ALADDIN

READI-CUT HOMES

THE ALADDIN COMPANY WAS FOUNDED FORTY-THREE YEARS AGO



THE NEWPORT—SEE PAGE 2—FOR PLANS AND DESCRIPTION

SAVE FOUR
PROFITS
ON THE

LUMBER, MILLWORK, HARDWARE AND LABOR

THE NEWPORT—Shown on FRONT COVER

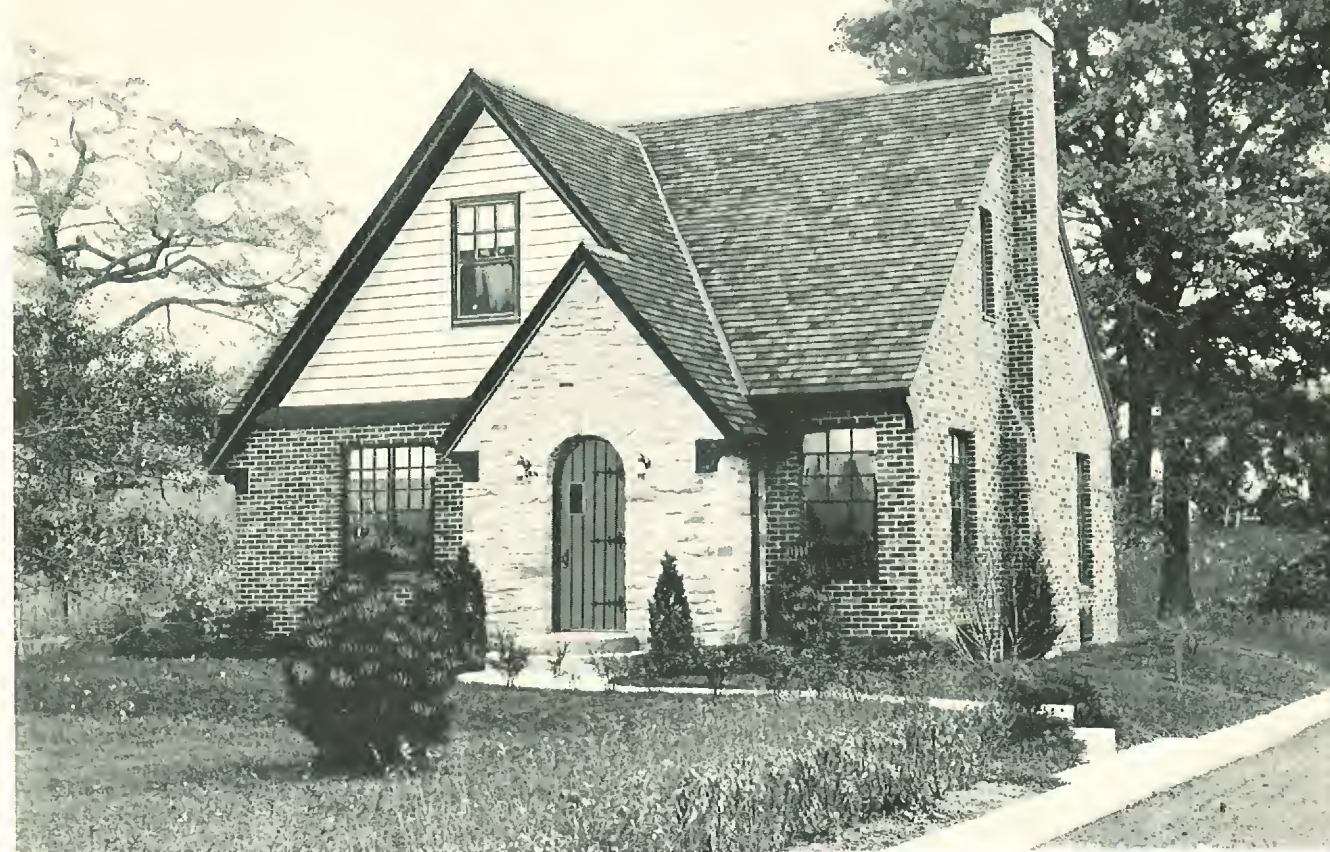
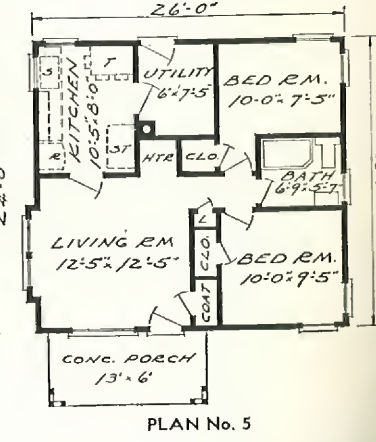
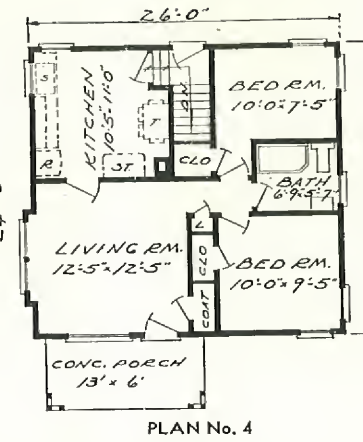
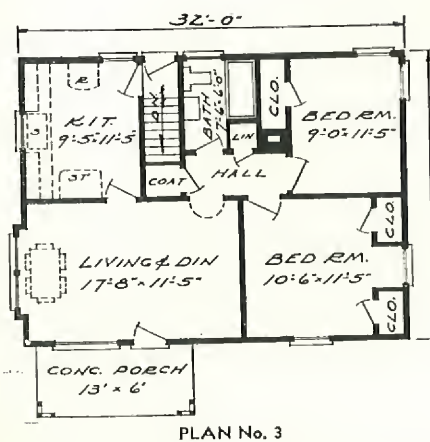
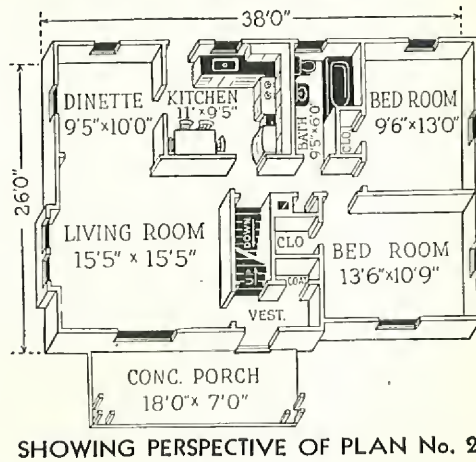
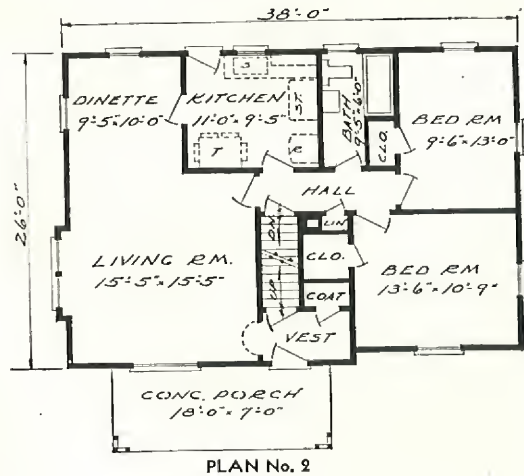
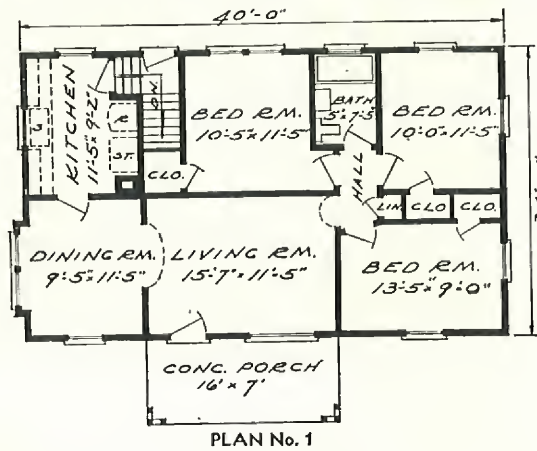
As new, as fresh and as lovely as tomorrow's colorful sunrise, the Newport is a shining example of all that is good in a modern and modest home. The usual severity of a plain roof is broken by the slight offset at the right, the porch roof with triple columns blends perfectly and protectively into the whole structure while the picture window is well proportioned and attractive. Note the left elevation where you find perpendicular siding in the gable and offering contrast to the usual siding being separated at the ceiling line by dentils. The projecting mullion window completes a picture of originality and charm.

Four sizes with five floor plan arrangements offer a wide choice, one of which is almost sure to meet your ideas of a delightfully lovable and conveniently arranged home of today. Plan No. 2 is priced with second floor unfinished, which permits later expansion by the addition of two rooms above. Refer to page 33 for further information about stairways—and the optional ornamental screen door shown on the Newport is described on page 34. **WE PAY THE FREIGHT.**

PAY YOURSELF THOSE HIGH WAGES

Dear Sirs:
We are coming along fine with our lovely new Brewster No. 2 house and only wish you could personally hear some of the many compliments we received on the quality of material, floor plan, workmanship, etc. My husband and son are doing practically all the labor themselves in their spare time, evenings and weekends.
Mrs. G. W. Remplar

Perrysburg, Ohio



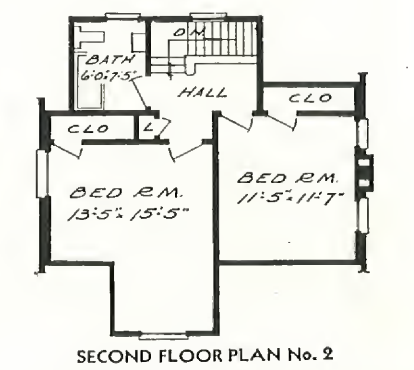
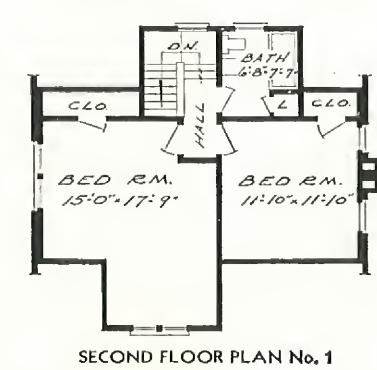
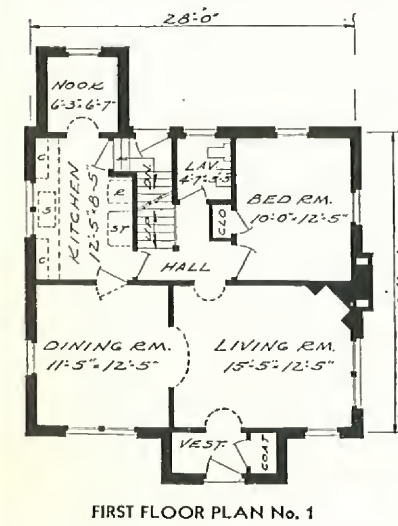
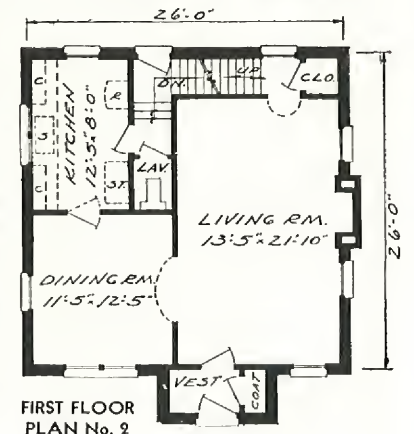
THE HAMILTON—A Tremendously Popular Design—

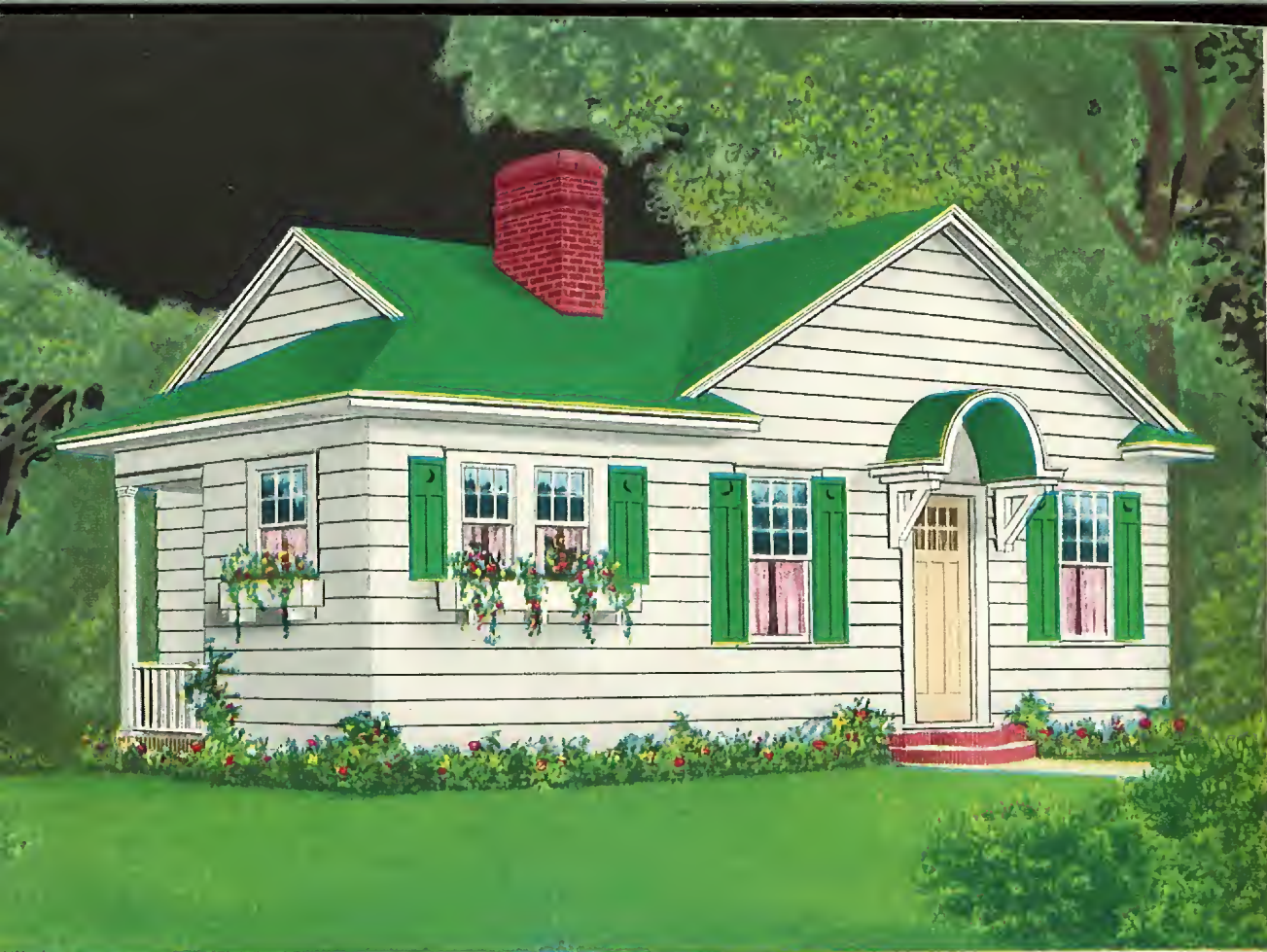
Price Given On Enclosed Price List **WE PAY THE FREIGHT**

Many Aladdin houses have been built of brick veneer. We, of course, will quote on any design in the book, omitting siding and furnishing special window and door frames. The Hamilton illustrates the attractions of the type. While the vestibule entrance shown above is of stone, it can be constructed of brick. The Hamilton is a beautifully proportioned structure and will match the finest homes in any neighborhood. We will, of course, furnish this design with siding if preferred. Siding for the front gable and rear dormer are included in price given on enclosed price list but no siding for the rest of the house is included. We do not furnish brick or stone. Ask for price with siding.

Every modern that is expressed in the arrangement of the interior. Note the large vestibule with cloak closet, and arched opening leading from living room. Kitchen design is planned for step saving. Two splendid bedrooms are found on second floor with linen closet and bath.

We are proud to present this Aladdin home, confident that it will give the highest satisfaction to every owner. We would like to give you more information about it if you will write us. Complete detail specifications will be mailed on request.



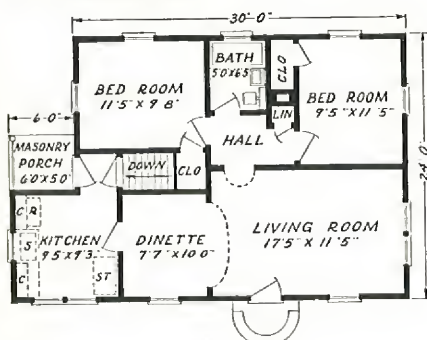


THE GABLES—Quaint and Original—

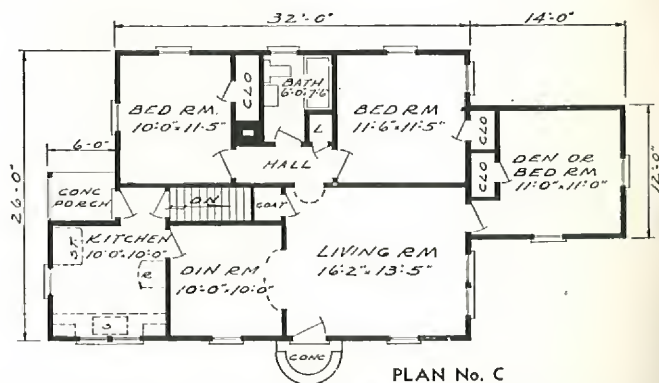
Price Given
On Enclosed
Price List

WE PAY THE
FREIGHT

Unusual features distinguish this new and original home. A charming hood graces the front entrance. It is supported by well proportioned brackets and offers ample protection to the terraced steps. Roof lines, both gable and hip, are distinctive. The rear service porch is an attractive feature. Two sizes are offered to you, if you are attracted by the Gables. In Plan A, the living room is large and given greater spaciousness by the alcove type dinette. Note that the kitchen has light and exposure on two sides. Cellar entrance is provided directly from the kitchen. Two bedrooms with ample closets, hall and bath offer every convenience and comfort. Plan C shows an added bedroom and incorporates a dining room. The built-in goodness, genuine quality of all materials and the beauty of this home will be a great satisfaction to every owner. Remember Aladdin's guarantee of satisfaction or your money back is your protection in building the Aladdin way. "Sold by the Golden Rule" has been tested by thousands of home builders to their lifetime gratification. Write for detail specifications.



PLAN No. A



PLAN No. C

Dear Sir:
Again I must say that I am very proud of my Aladdin house and the materials that was furnished for it. Thanking you for your prompt service that I have received from the Aladdin Company,
Yours truly,
R. F. Reynolds

Lexington, Virginia,
May 24, 1948

Dear Sirs:
To date I have received everything and I am going to tell you I can't see how you can do such a perfect job; the material was perfect in every respect. I just never could praise your job on the home enough. I have had hundreds of people come to look it over. Two weeks from the day I started the house itself, the frame, all sheathing, sub-floor and roof boards were on.
Harold Conklin

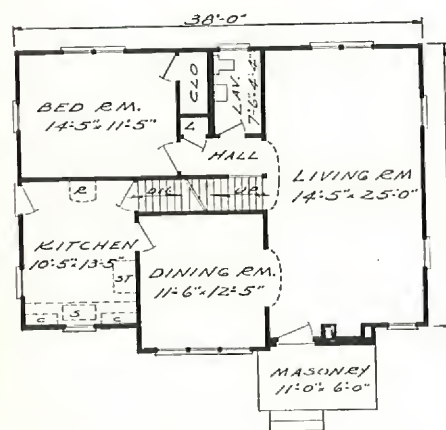
Copake, New York,
October 9, 1948



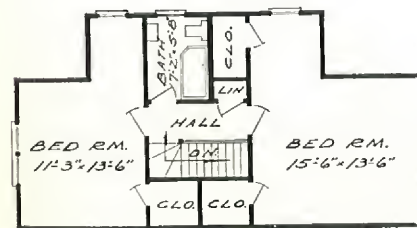
THE SHELBURNE—Fascinating in Detail—

Price Given
On Enclosed
Price List

WE PAY THE
FREIGHT

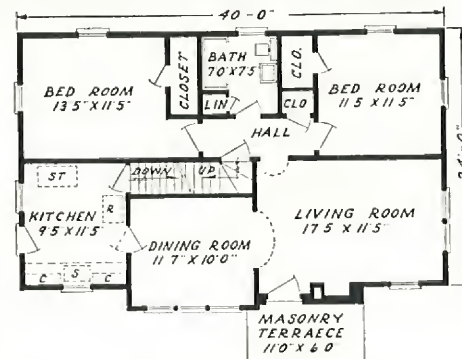


SHELBURNE No. 1—FIRST FLOOR PLAN

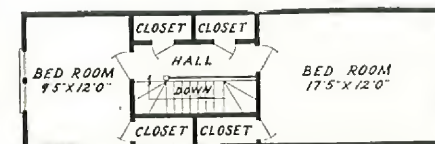


SHELBURNE No. 1—SECOND FLOOR PLAN

The Shelburne was first erected in Bay City and opened to the public by Aladdin as a Model Home. Public approval was instant and unanimous and confirmed the good judgment of our designers. It is modeled along ultra modern lines, strong colors and contrast in the chimney, enlivening the picture from the approach. An intriguing front door, with circle top and embellished with large antique hammered hinges adding distinction to the entrance. The No. 1 Plan is priced with two large bedrooms and bath on second floor making this a three-bedroom home. In Plan No. 2 you will note that an enclosed stair leads to second floor from hall. We have priced the Plan No. 2 including enclosed stairway to second floor and a sub-floor making a large attic storeroom. We will be glad to quote a price on the upstairs furnished as shown in the second floor plan, or the upstairs can be finished off at any time in the future when it is convenient for you to do so. This gives you a chance to convert a two-bedroom home into a four-bedroom home when conditions require additional rooms. Write for specifications in detail.



SHELBURNE No. 2—FIRST FLOOR PLAN



SHELBURNE No. 2—SECOND FLOOR PLAN



THE SUNSHINE — An Honor Design —

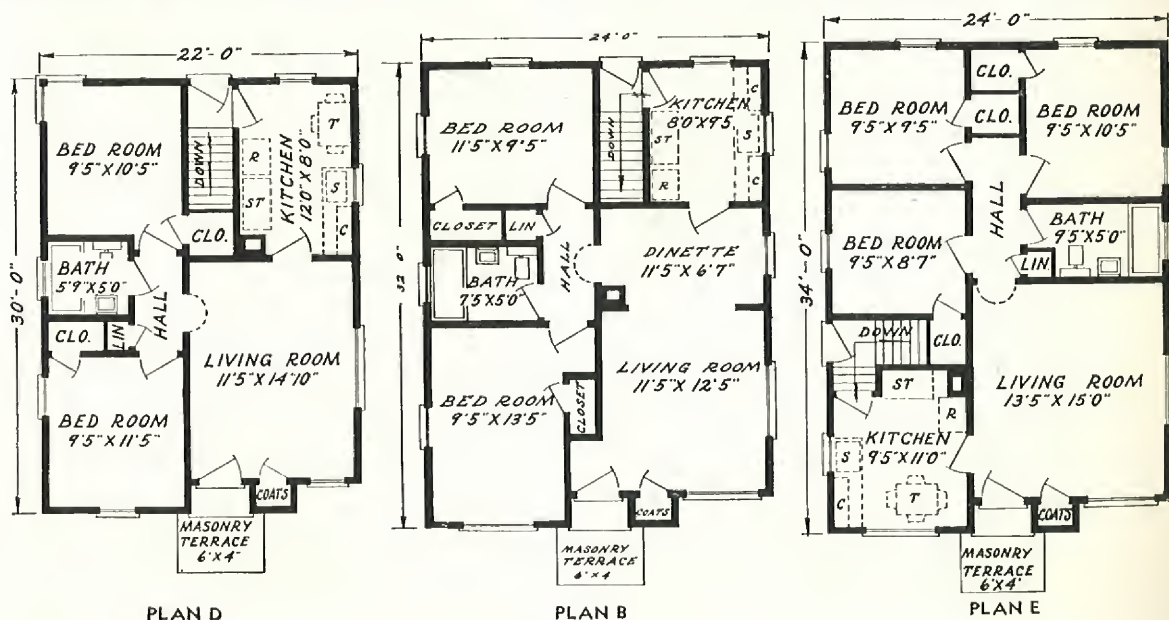
Price Given
On Enclosed
Price List

WE PAY THE
FREIGHT

New and sparkling is this latest creation of Aladdin designers. It received first honors in a recent contest. The Sunshine promises to be a first choice of many homebuilders this year, too. Wherever it has been shown, it has received high praise for exterior beauty and effective interior planning.

Three sizes are shown in the plans below. One 22'x30', one 24'x32', and one 24'x34'. Each plan offers the last degree of efficiency in arrangement and remarkable utilization of space. Observe the careful location of windows and doors to give greatest possible amount of usable wall space. Exceptional closet space is provided in each plan.

You will be permanently happy in the possession of any of the three Sunshines, because through the efficiency of the Aladdin Read-Cut System and economy of erection cost every dollar invested will give full and highest value.



THE CONCORD — One of Aladdin's Newest —

Price Given
On Enclosed
Price List

WE PAY THE
FREIGHT

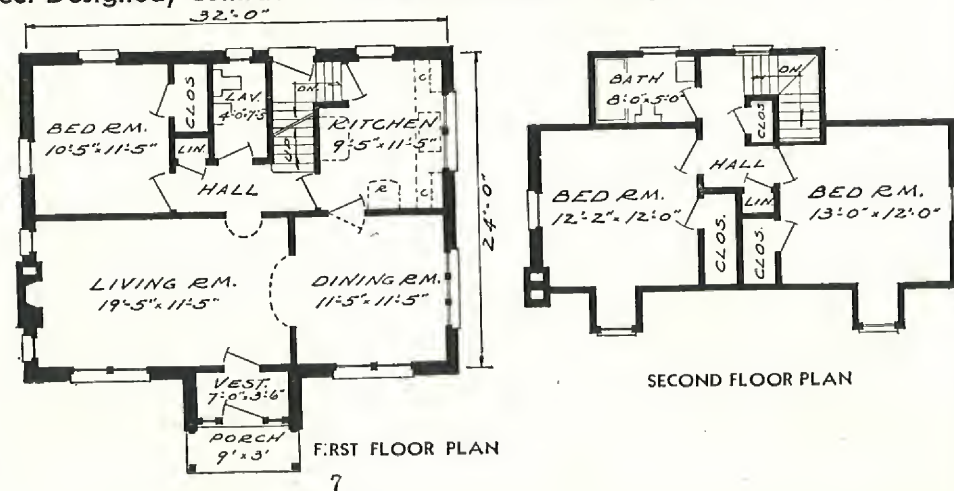
Distinction is given this charming design by an entrance at once original and appealing. Pillars grace the gabled vestibule while an arched ceiling adds a new touch to the design. Narrow side lights on each side of the front door afford light to the vestibule. The main structure of the Concord is beautifully proportioned. Besides a splendidly spacious living room, the first floor contains a suite including bedroom, lavatory, linen closet and clothes closet. These are entered from the separate hall from which the stairway also leads to the second floor. Grade cellar entrance occupies the space under the main stairway. All four downstairs rooms have double exposure for light and air. The fireplace may be built in as shown, or omitted if desired. On the second floor are found two well planned bedrooms, bathroom and four closets. The Concord is priced without brick or any masonry material. We do not ship brick but can quote price if you would like siding on the exterior. Always keep in mind the high quality of materials built into all Aladdin houses and that this quality can be had at such great economies only from The Aladdin Company. The Read-cut System backed by volume production is the reason. Our Golden Rule Service and money back guarantee are your protection. Complete detail specifications mailed on request.

The Construction Used in an ALADDIN HOME Is the Same as That Used in the Best Architect-Designed, Contractor-Built House Erected Anywhere

BRICK VENEER

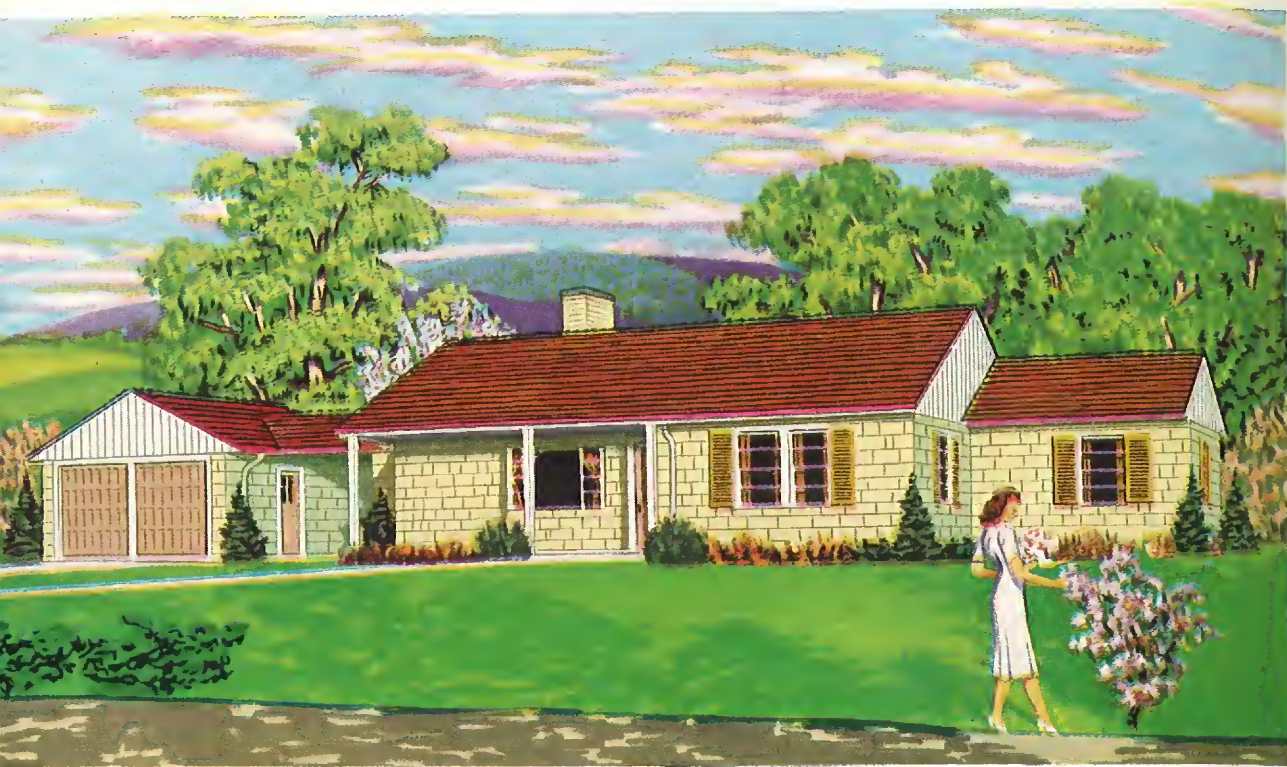
Any Aladdin House shown in brick veneer can also be had with siding on the exterior if preferred. Write us for prices regarding this change.

Any Aladdin Home shown with siding or shingles can be built having a brick veneer exterior. We do not furnish any of our homes for a solid masonry exterior wall, such as solid brick, concrete blocks or stone.

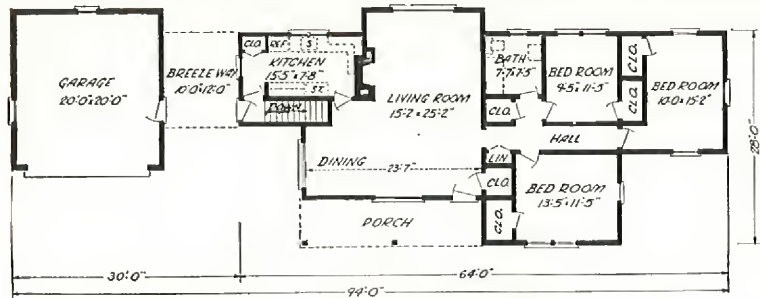


FIRST FLOOR PLAN

SECOND FLOOR PLAN



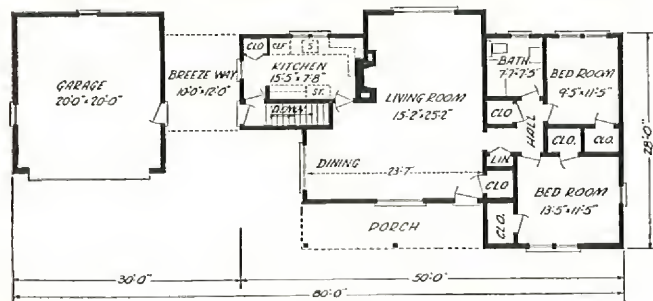
THE PALM SPRINGS—A Typical Western Ranch House



PLAN No. 1

QUALITY ENDURES THROUGH THE YEARS — READ PAGE 35

SHOWN HERE ARE TWO FINE PLANS. EACH CAN BE HAD WITH GARAGE AND BREEZEWAY



PLAN No. 2

RANCH HOUSES

The inspiration for the ranch house type of home originated in the West and its present great popularity is based on sound reasons. It is a one-story type home which features plenty of light and air. Its longest dimension usually faces the street or road and its approach is inviting and friendly. If you require a one car garage, we will be glad to quote with breezeway connecting, or if you desire a two car garage, we can quote the arrangement as shown in the illustration above.

Present day homebuilders have shown a tremendous interest in Western Ranch House Architecture. Its attractions are many and by all means sensible. It is a type that is suitable for all climates, east or west, north or south. It is featured by a low roof, wide eaves, a covered porch and unusual spaciousness. The Palm Springs plan incorporates all these features harmoniously and in good proportion.

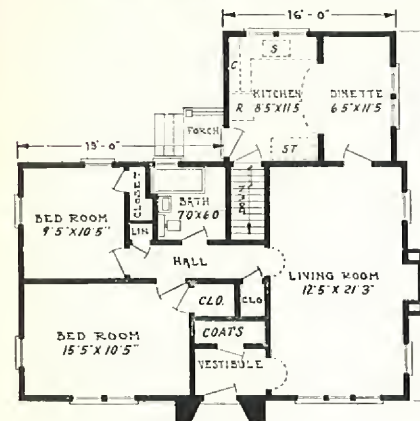
The Breezeway connecting the house proper and garage is used as a shady porch, an outdoor dining place or a covered space for garden furniture and children's playthings. Of course it is excellent protection to reach the garage in inclement weather. Two plans are illustrated above, each of almost identical exterior appearance. Cellar stairs may be omitted from either plan if no basement is desired. Our plans contemplate concrete floor for both the garage and Breezeway. We furnish no masonry. Each plan is priced without Breezeway or Garage. Write for prices on these items. Send for detail specifications. We pay the freight.



THE FERNDALE — Modern Simplicity —

Price Given On Enclosed Price List

WE PAY THE FREIGHT



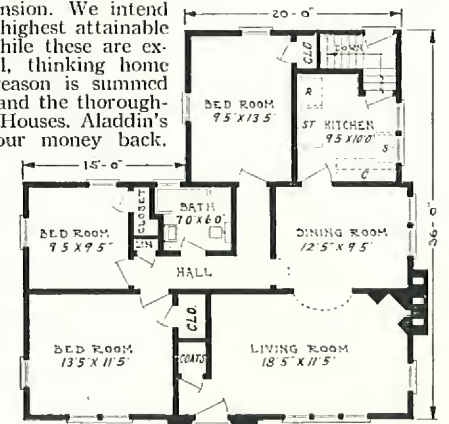
PLAN NO. 1

OVER FORTY-THREE YEARS HOME BUILDERS TO THE NATION

An exquisite example of modern simplicity in home architecture is presented in this wholly new creation. It appeals instantly to the most fastidious. Originality of treatment is shown in this recessed entrance, surmounted by small, well proportioned gable. A triple window is observed in the front of the living room, while double or mullion window matches this in the front bedroom. Two sizes are illustrated below, one of two bedrooms and one of three. These plans merit the closest study which will result in highest approval of the skill of our designers. Thoughtful consideration has been given to the comfort and needs of the family. Well proportioned rooms, ample closet room and wall space and step saving placing of communicating rooms, testify to the values of the Ferndale. Write us for additional information, and detail specifications.

ALADDIN'S Matchless Guarantee

What Induces Us to Supply Such Matchless Quality? Aladdin believes the modest home merits the same goodness as the mansion. We intend to nail Aladdin quality on the highest attainable pinnacle and keep it there. While these are excellent reasons for the careful, thinking home buyer, the real undebatable reason is summed up in the goodness, soundness and the thoroughness of the quality of Aladdin Houses. Aladdin's Guarantee: Satisfaction or your money back.



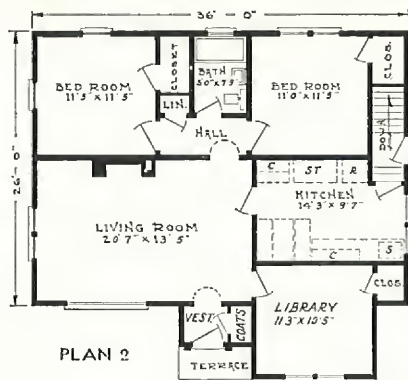
PLAN NO. 2



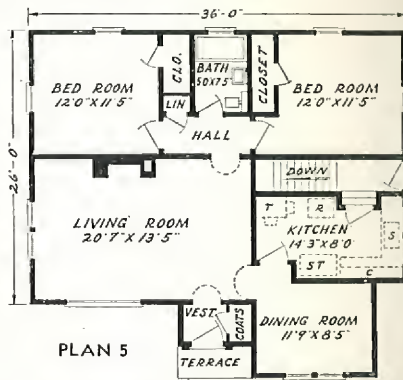
THE PILGRIM—Three Splendid Plans—

Price Given
On Enclosed
Price List

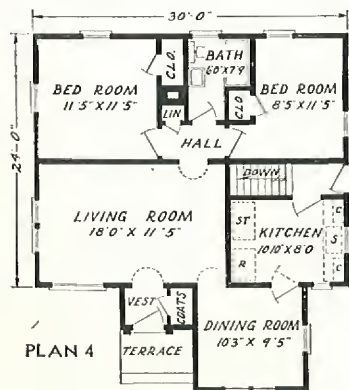
WE PAY THE
FREIGHT



Skilful planning of Colonial and modern details is immediately evident in the picture of the Pilgrim shown above. In Plan 4 and also in Plan 5, we can arrange a stair to the attic leading out of the living room and running up over the stair to the basement. This item is not included in our list prices but we will be glad to quote on this change which will include windows for the second floor. Write for detail specifications.



ATTIC
Turn to page 33 and note the beautiful arrangements that can convert an attic into a usable second floor.

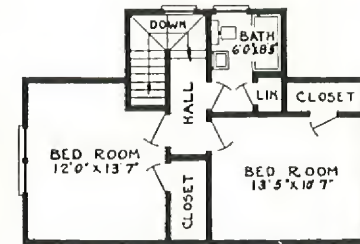
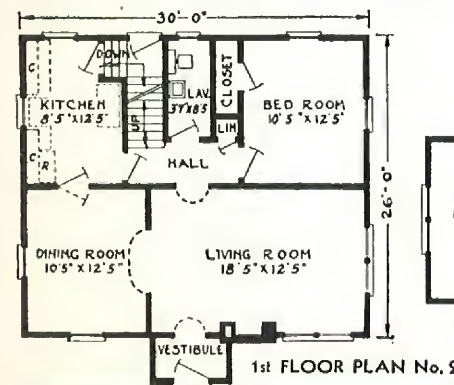


PILGRIM with BREEZEWAY and GARAGE

The photo above pictures the Pilgrim with the ever popular breezeway connecting the house proper with the garage. The breezeway can be used as a shady porch, outdoor dining place and a covered space for garden furniture and children's playthings. It affords excellent protection to reach the garage in inclement weather. We can quote on furnishing the above described breezeway with garage (for one car or two cars) for the Pilgrim home or most any Aladdin home shown in our catalog.

THE VASSAR—Model Story and One-Half—

Price Given
On Enclosed
Price List



The Vassar is a master design. It is typical of the demand in the modest American home. The Vassar possesses originality, character and beauty. The vestibule entrance is surmounted by a half pitch gable roof, the front of which is embellished with artistic mouldings while pilasters form the frame for the front door. This entrance gable harmonizes with the larger gable which is a harmonious background for the fireplace chimney. Note the convenient arrangement in the hall which gives you access to the first floor lavatory, stair to second floor, kitchen and bedroom.

Complete specifications mailed on request.



ALADDIN INTERIORS

Shown here are two typical Aladdin interiors in full actual colors. They were photographed in the Pilgrim home of Mr. and Mrs. John S. Clark of Petoskey, Michigan. Their Pilgrim was built in the spring of 1948. Mrs. Clark writes us that she will be proud to show her lovely home to any interested prospective Aladdin home builders. You, too, can create equal beauty in the Aladdin of your choice.





THE BRENTWOOD — A Notable Design —

Price Given
On Enclosed
Price List WE PAY THE
FREIGHT

Here's a home of sunshine, flowers, trees and foliage, one of Aladdin's most notable offerings to home builders. The observer has a desire to stroll up the walk and step into a home that breathes hospitality and charm.

The excellent balance of the exterior is immediately apparent to the observer, the terraced entrance surmounted by a gabled vestibule and flanked by twin mullion windows.

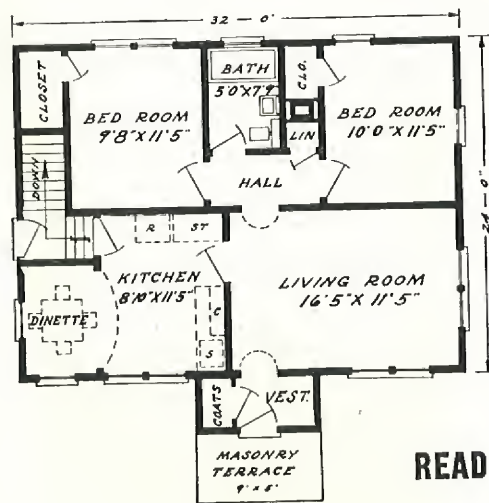
Two sizes are shown below for the Brentwood. Each has many desirable features and each will furnish the owner with the utmost home satisfaction.

Plan A is 32' x 24' and presents well proportioned rooms of maximum efficiency and convenience. Note alcove dinette with particularly splendid lighting.

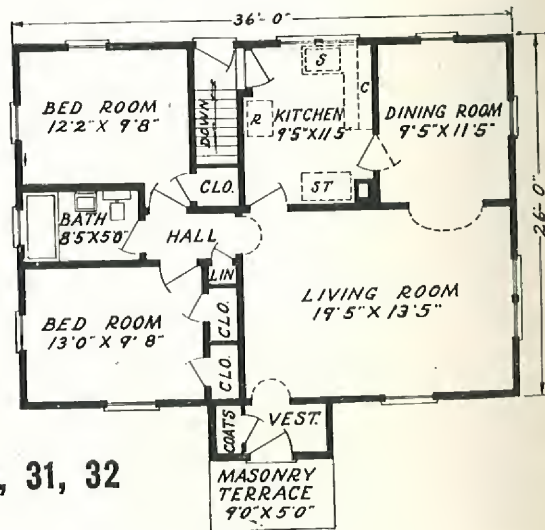
Plan C is size 36' x 26'. Altogether the Brentwood fulfills the highest expectation of exacting home-builders. Iron railing on terrace not included. Our facilities and experience are at your service. Write for detail specifications.

PICTURE WINDOWS

We can substitute a picture window for a single or double window in any of our plans at an extra cost. Write us for prices. Our picture window designs are shown on page 34 of this catalog and come in two sizes, one 64 inches wide and the other 72 inches wide.



PLAN A



PLAN C

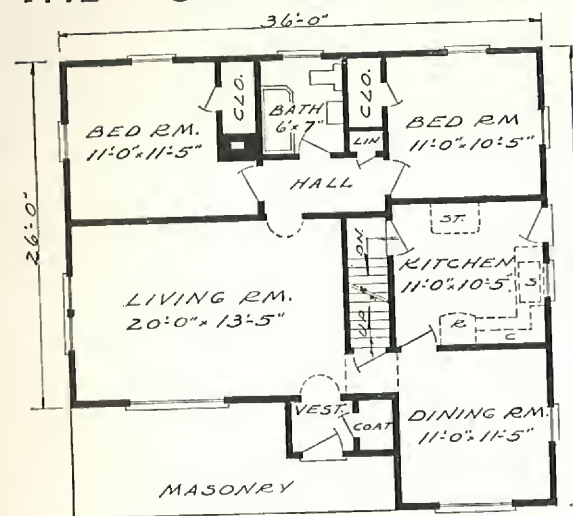
QUALITY
ENDURES
THROUGH
THE YEARS

READ PAGES 30, 31, 32

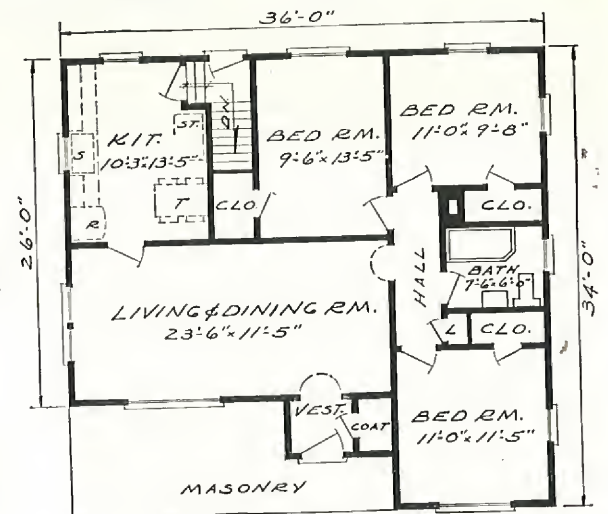


THE ROSEWOOD — Beautiful Design —

Price Given
On Enclosed
Price List WE PAY THE
FREIGHT



PLAN 1



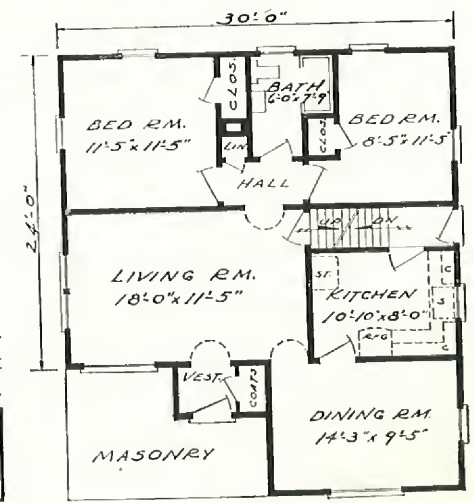
PLAN 2

Skillful treatment is portrayed in the well proportioned gables fronting the Rosewood. Perpendicular siding at the front offers pleasing contrast to the usual clapboard siding, and permits a contrasting color of your choice.

Picture windows are shown in both living room and dining room of each of the three floor plans. In Plans No. 1 and No. 2 you will note that the overall size of the house is the same, but the dining room is omitted from Plan 2 and becomes a third bedroom. All three arrangements merit your careful study to choose the one which best suits your needs.

The stairway to second floor makes possible the addition of extra bedrooms at some future time—"a house that grows." Our price does not include any materials for the second floor. Send for detail specifications.

WE SHIP COMPLETE HOUSE IN SEALED BOX CAR



PLAN 3



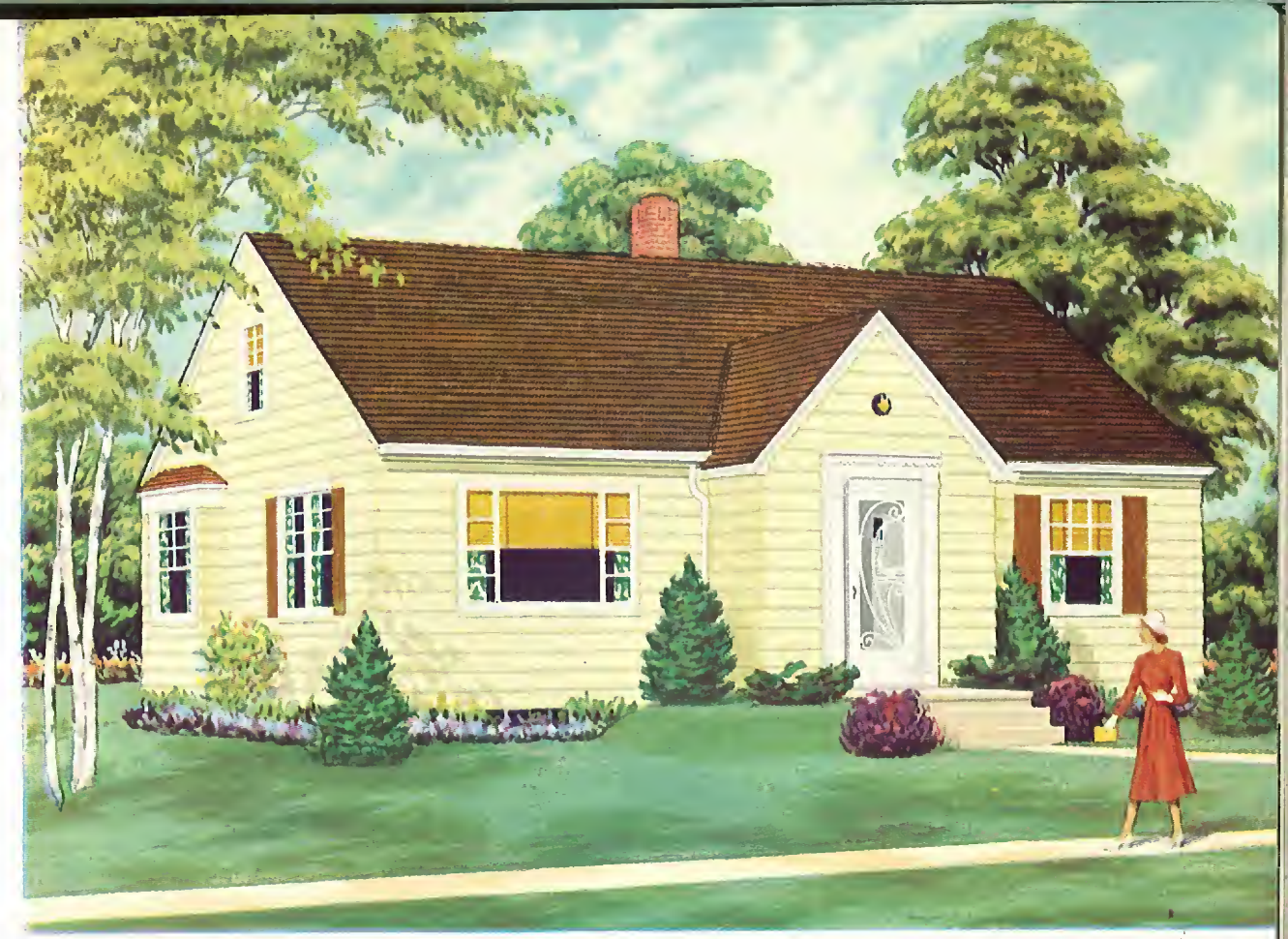
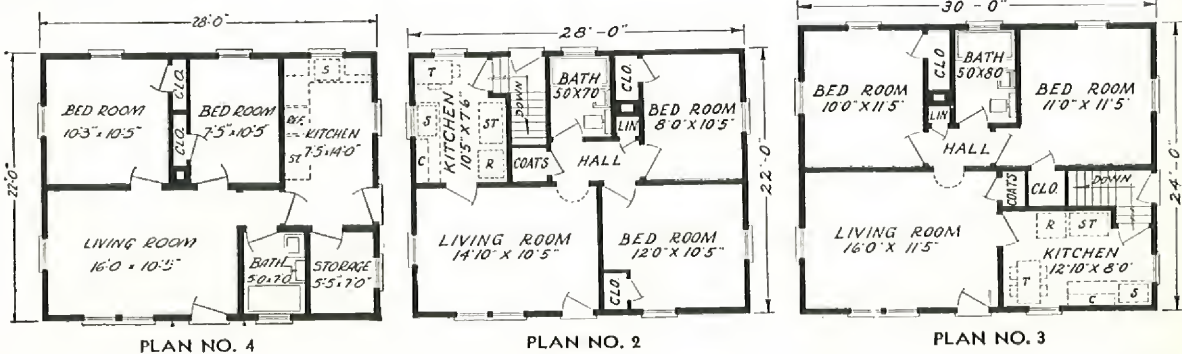
THE MT. VERNON—A Typically Modern and Economical Design—

Price Given
On Enclosed
Price List

This modest but beautiful home is one of our newest. Its simplicity of form, its cleanliness of lines and its perfect proportions fill all observers with enthusiasm and admiration. It will measure up to its surroundings wherever built. Its choice of three sizes is shown below for the Mt. Vernon, each plan to express the best features of model interiors. Plan 2 is 28' wide and has a depth of 22'. A generous sized living room affords excellent wall space for your furniture. The kitchen arrangement admits the placing of dinette table and chairs. Two conveniently placed bedrooms with four closets and bath complete the plan. Plan 4 is the same size as Plan 2 and is designed for those not wishing to have a basement. A storage or utility room is provided in this arrangement. The largest of the three, Plan 3, is 30x24' and with all the foregoing and added features offers rooms of proportionately larger sizes. The Mt. Vernon is proving to be one of our most popular homes. Write us about it. We will send you detail specifications.

**WE PAY
THE
FREIGHT**

**You Save When You Build The ALADDIN Way
Because Factory Cutting and Fitting Reduces
The Labor Cost 30% and Lumber Waste 18%**

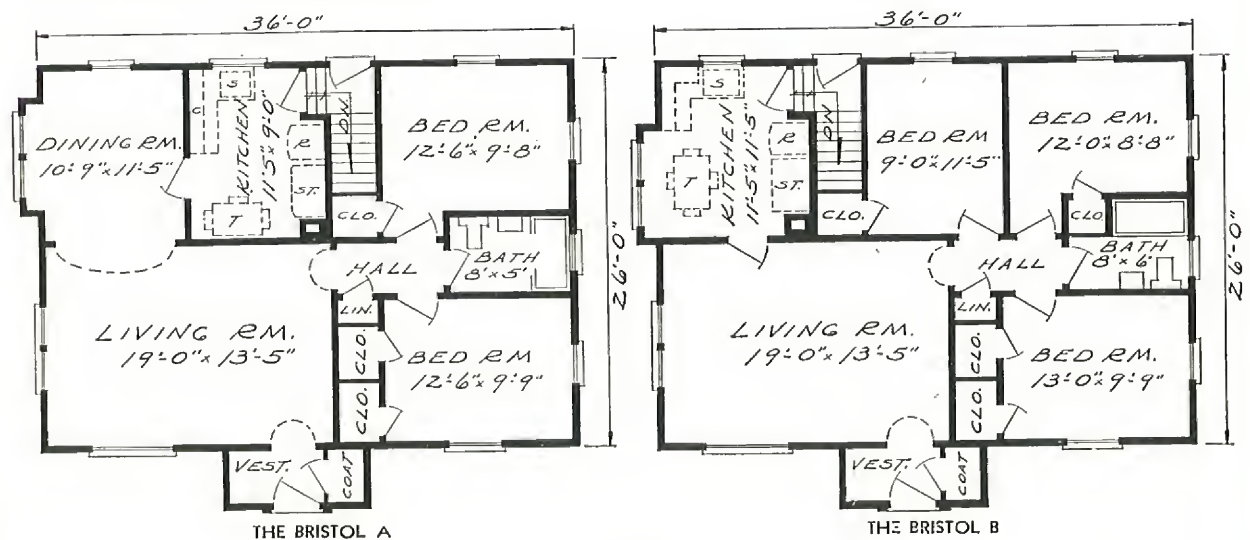


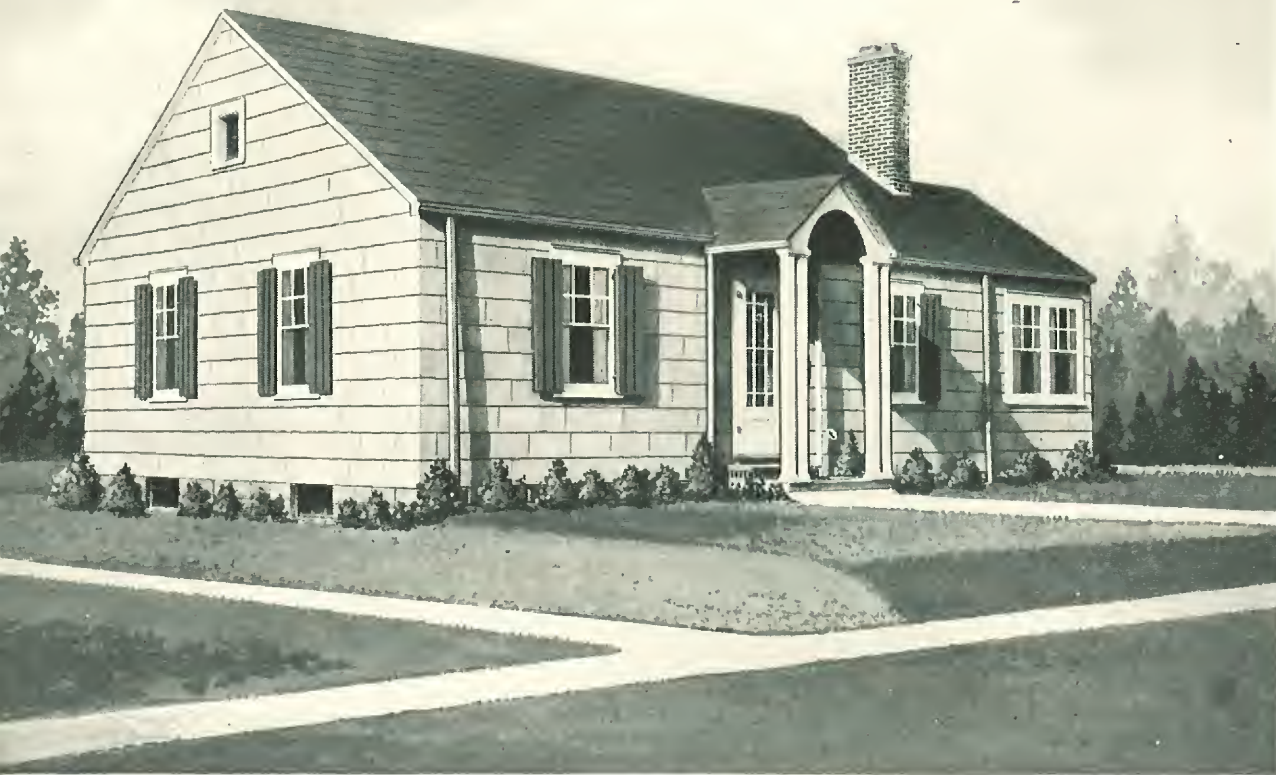
THE BRISTOL—Modern American—

Price Given
On Enclosed
Price List

**WE PAY THE
FREIGHT**

The Bristol is embellished with two typically Colonial features, the front entrance and the bay window in the dining room. Fluted pilasters bordering each side of the front door, are topped by a head casing designed with dentils. This beautifully proportioned ensemble is of true Colonial inspiration, and affords a genuine welcome to those who enter its portals. The Bristol has proven very popular and has received loud praises of its beauty, convenience and economy from those who have built it. Its interior arrangement includes very desirable features of the ultra modern American home. The Plan B arrangement provides 3 bedrooms of a commodious size that will take care of the needs of the average family. The 2 bedroom arrangement, which is the Bristol, Plan A, provides dining room accommodations. Both plans surely deserve a careful study to be fully appreciated. We will be glad to discuss with you further details of your individual wishes. Write us for detail specifications.





THE WINSTON—Latest in Exterior—

Price Given
On Enclosed
Price List WE PAY THE
FREIGHT

One of the newest developments in plastic building materials is the Cement-Asbestos wall shingle which is pictured above on the side walls of the Winston. These shingles are 24 x 12 inches in size, fireproof and never have to be painted. We can of course furnish them in place of siding for any Aladdin house. Write for information.

The Winston is one of our newest designs and we present it in two attractive sizes. A special feature of this home is the original columned entrance, rising from a masonry terrace. A study of the floor plans below will show you a choice of size and design that covers a wide range of investment. Plan No. 1 is 24x40 feet over all and includes large living room, sun room, dining nook, kitchen, grade cellar entrance, two bedrooms, bath and closets. Fireplace may be omitted if desired. Plan 5 will warrant careful study to appreciate the desirable features. All materials in these Winston plans are of the same high quality and the sturdy construction is unchanged from that of the largest Aladdin home. Write us about the plan that appeals to you. Complete detail specifications mailed on request.

Disappearing stairway may be installed in hall of either plan. This stairway is shown and described on page 33 of this catalog, and gives access to attic.

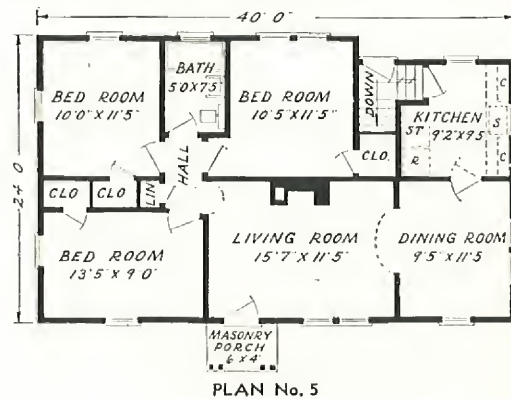
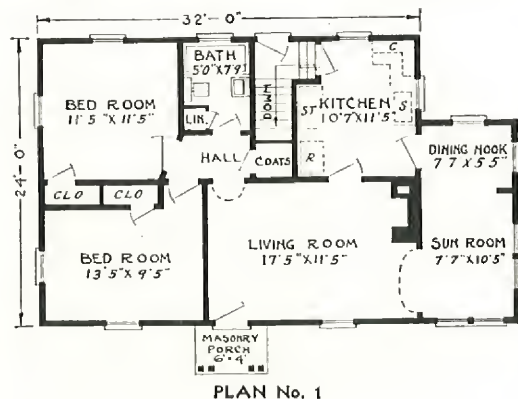
Gentlemen: Salem, Indiana

The Columbia was ready for occupancy within 10 days. The woodwork and doors were such good quality that I used white shellac to preserve the beautiful grain.

The carpenters said the windows were the easiest hung of any they had ever handled, and they rejoiced in the lightness, smoothness of the dry lumber.

It was a positive pleasure not to be running here and there to collect material, but to have it on the premises, the lumber ready cut, and after completion, not to spend hours picking up waste.

Miss Harriet Reid

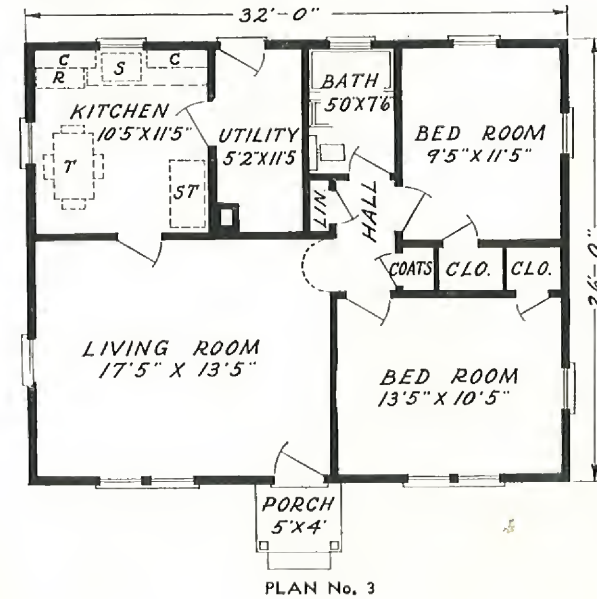
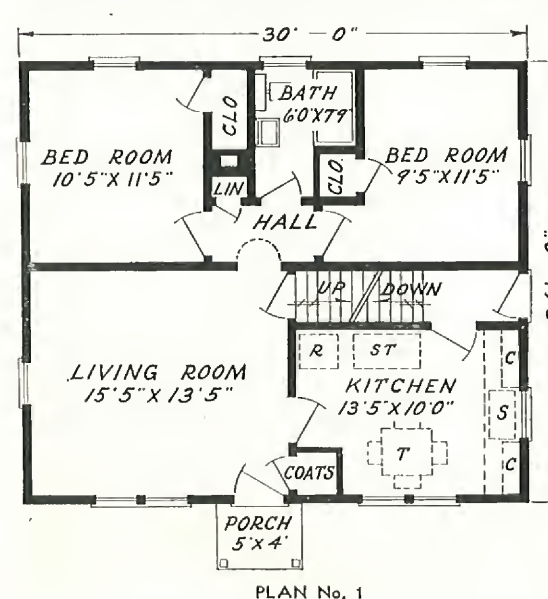


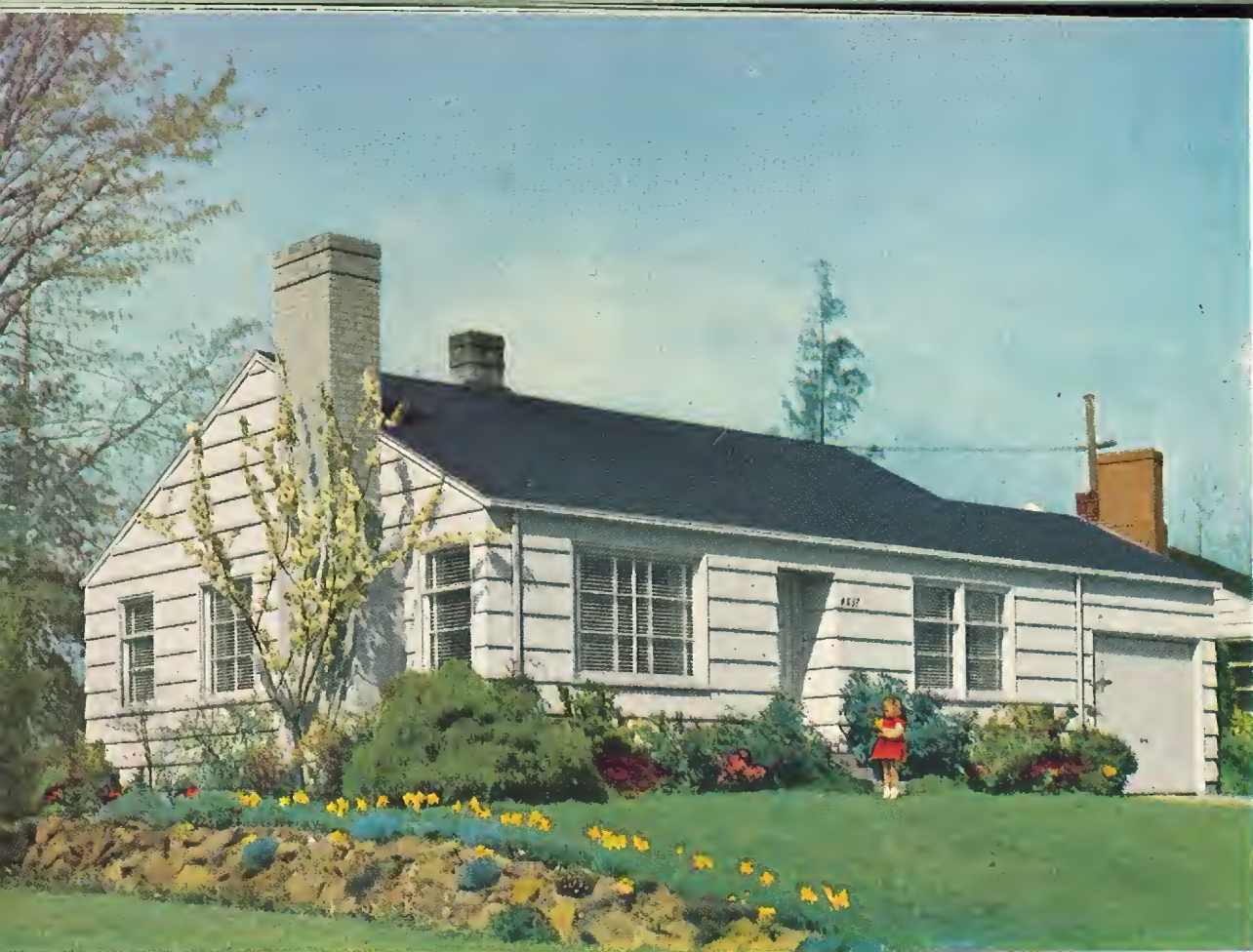
THE NORFOLK — Two Interesting Plans —

Price Given
On Enclosed
Price List WE PAY THE
FREIGHT

Highly popular in its appeal to present day home builders is the type represented by the Norfolk. And there is good reason behind this popularity. Its simplicity of design, the absence of unnecessary embellishment or furbelows, insure that no money is wasted. Every dollar expended for material and labor achieves the maximum of home comfort, convenience and utility. Two plans are shown below to meet your particular choice. In Plan No. 1

access to the second floor is provided by an enclosed stairway. It is of course possible to finish off this space for use as either storage or added sleeping quarters. Plan No. 3 includes a utility room when basement is not desired. Folding stairway can be installed in ceiling of hall to reach second floor. See Page 33. Complete detail specifications mailed on request.





THE PARKWAY—New and Modern

Price Given On Enclosed Price List WE PAY THE FREIGHT



THE BREWSTER—Beautiful in Its Simplicity

Price Given On Enclosed Price List WE PAY THE FREIGHT

This actual color photograph of the Parkway pictures one of our newest modernized Colonial designs—truly a "Home of Tomorrow." Here for the first time, too, we are showing the newest thing in insulated heavy outside cedar shingle walls. Note that deep shadows thrown by the thick base of the shingles soften the severity of plain white walls. Under each shingle is an under-course of unstained cedar giving added insulation value. All shingles are dip stained when received by you which further saves the cost of painting your new home. Write for detail specifications.

Supremely good taste was employed by our designers when they formulated the Brewster. It is a choice architectural gem, clean in line, employing a form of simple beauty and exquisite simplicity. It is truly a work of art yet most practical in execution for its very simplicity is reason for its astonishingly low cost.

Waste of material is eliminated, every foot of lumber giving 100% value in space, convenience and comfort. The columned and hooded entrance incorporates a commodious vestibule. The interior has every facility needed in a modern home. The excellent living room will more than answer the average family's requirements as to size and wall space.

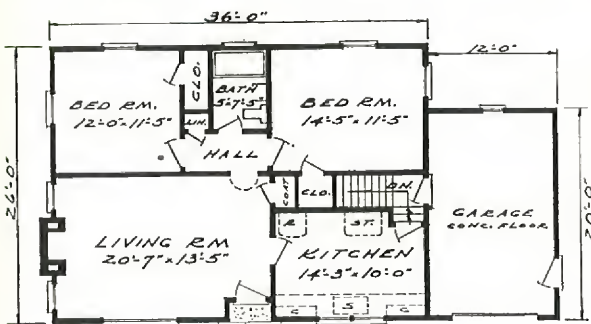
If you prefer shingles as shown on page 18, for the exterior instead of clapboard siding, we can meet your wishes altho this Colonial type home is very well adapted to siding for the exterior.

A very convenient hood is furnished at the side over the outside door on Plan 2. Complete detail specifications will be sent on request listing all materials we provide for this home. Attic stairway arrangements are shown on page 33, making possible extra rooms on second floor. Price of stairway given on request.

BREWSTER with BREEZEWAY and GARAGE

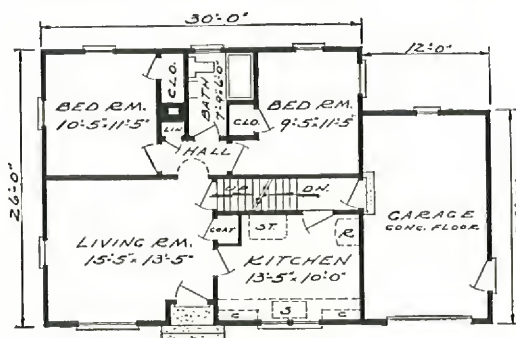
The Brewster, Plan 4 arrangement, is shown with Breezeway, size 10' x 8' and with garage 12' x 20' in size. We can also quote the Plan 4 arrangement having a two car garage instead of the one car if you prefer the double garage. This combination of Breezeway and Garage can be furnished with most any Aladdin design shown in this catalog. Write for details.

An Aladdin Home is Safer than a Wall Street Investment



PLAN 1

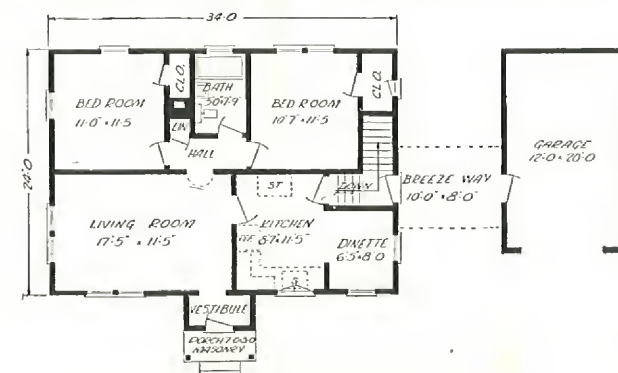
SAVE TIME—SAVE MONEY



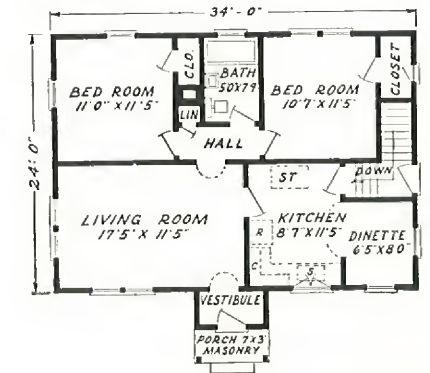
PLAN 2

A LOVELY KITCHEN

The fascinating treatment of the dining corner arrangement in the Sunshine E as shown at right, is possible in a great many Aladdin floor plans. Bright colors add greatly to the pleasure of home work.



PLAN No. 4



PLAN No. 2

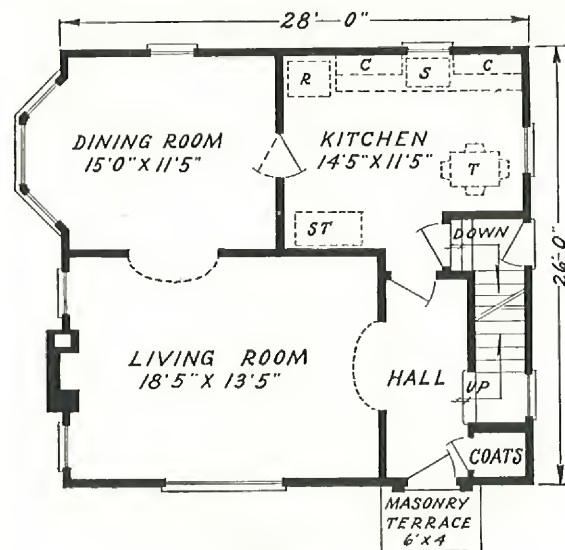


THE SUMMERSET—Typically Cape Cod

Price Given
On Enclosed
Price List

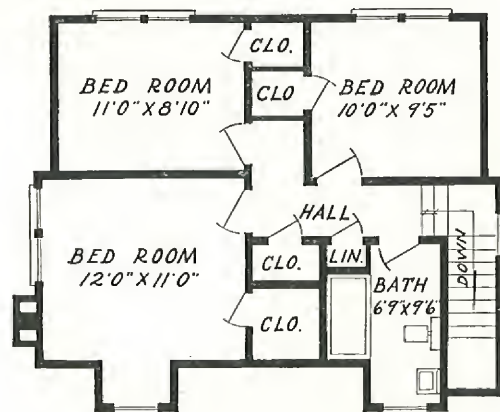
WE PAY
THE FREIGHT

Beauty and balance distinguish this perfect example of Cape Cod architecture. Thrifty New Englanders evolved a type of home in revolutionary times that matched their well known characteristics of simplicity, directness, economy and common sense. That it is sound architecture is evidenced by its return to popularity on the designing boards of the present day's leading architects. A living room 18' 5" x 13' 5"! It's of a size found in few houses twice as large as the Summerset. A dining room, kitchen and grade cellar entrance complete the perfect accommodation on the first floor. Master's bedroom matches the living room in spaciousness, and thoroughly adequate closet space is provided. Every dollar invested in this home gives magnificent values. Quality is built into every part—Aladdin Certified lumber and Aladdin Knotless finish. Complete detail specifications on request



FIRST FLOOR

BUILD IT YOURSELF



SECOND FLOOR



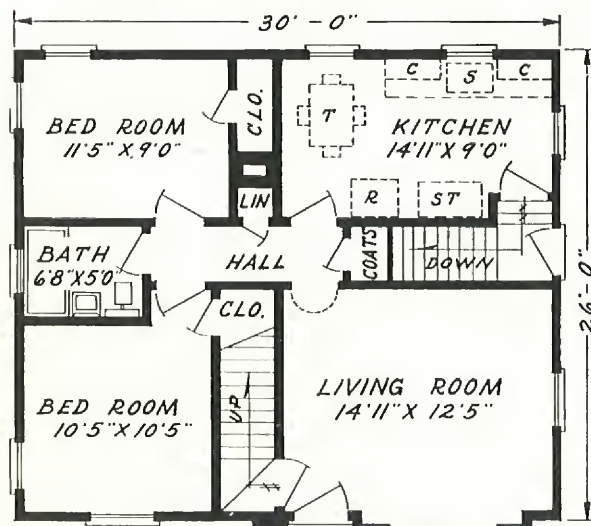
THE DRESDEN—From Connecticut Hills

Price Given
On Enclosed
Price List

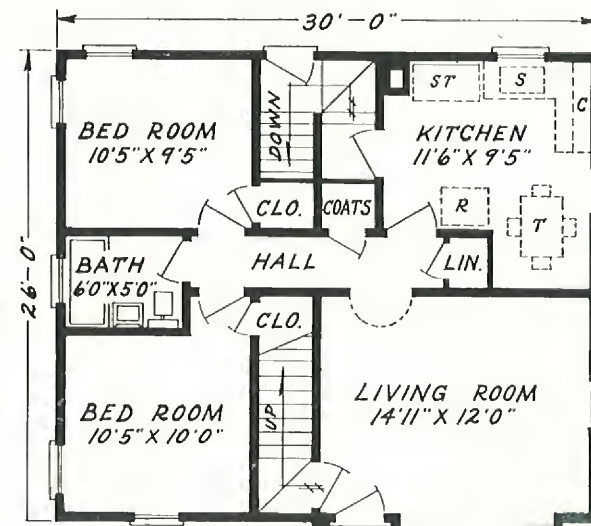
WE PAY THE
FREIGHT

Conservative and dignified aptly describes The Dresden, a design whose inspiration comes from the Connecticut hills. At first glance it appears to be a one-story home and its cost approximates just that. Yet provision is made for two good bedrooms on the second floor. The living room is of splendid size and well proportioned and lighted. The Dresden, as priced does not include material for finishing off the second floor but should you desire this accomplished, we will quote price on request. This arrangement adapts itself to a two-bedroom, three bedroom or four bedroom plan, and at a cost astonishingly below expectations. Complete detail specifications on request.

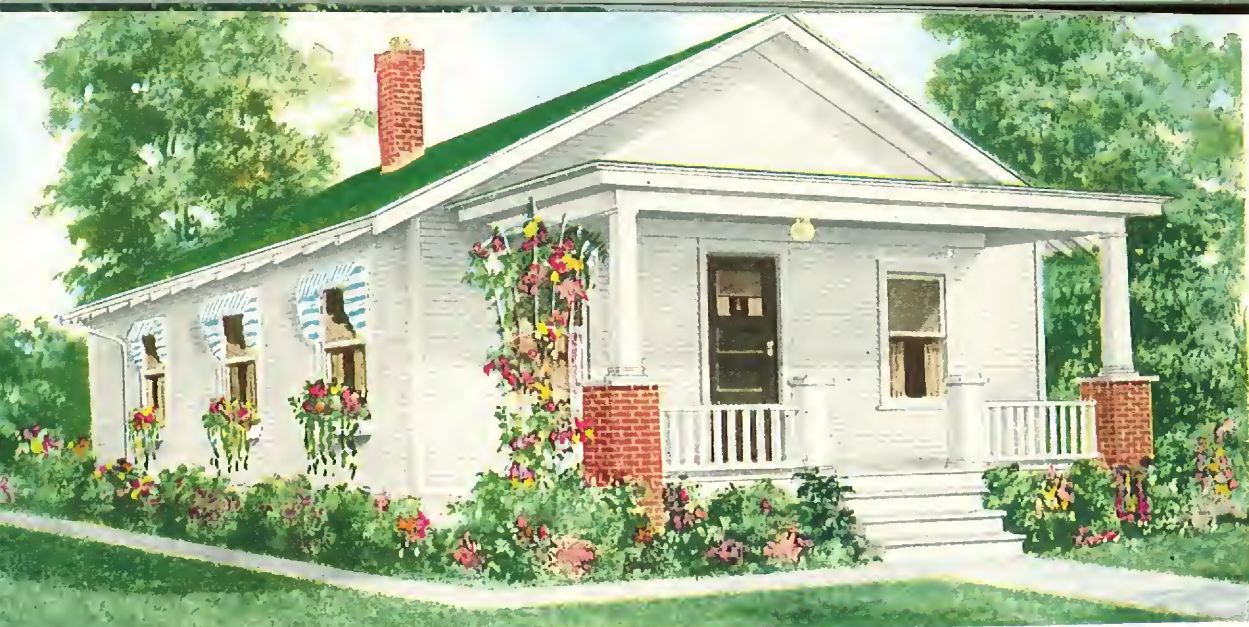
SOLD BY THE GOLDEN RULE FOR FORTY-THREE YEARS



PLAN C

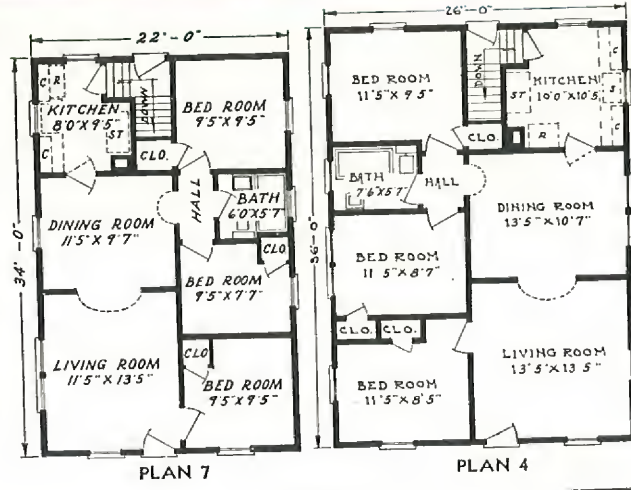


PLAN D

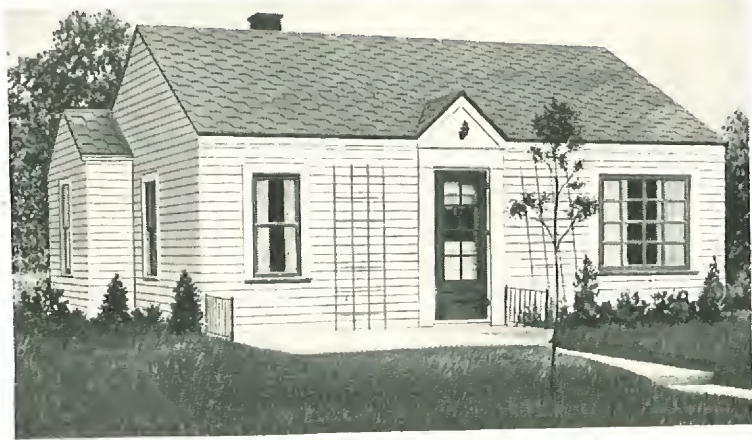


THE BIRCHWOOD — Price Given On Enclosed Price List

The Birchwood is a home of solid attractiveness. It will measure up to your highest expectations, from the strength of its sturdy timbers to the charm and beauty of its woodwork and finish. Shrewd buyers immediately recognize the opportunity to avoid paying the top prices charged by regular dealers—an opportunity made possible by dealing direct with the Aladdin Mills. The Birchwood is presented in two different sizes. The exterior is identical in each case, except as to location of windows. The design of the Birchwood, with porch included in prices given, is of standard conventional type that has been so popular for many years. The wooden columns of the Birchwood porch can be furnished to rest on the porch floor at no difference in price. It would then be unnecessary for you to build the ornamental brick piers.



BUILD IT YOURSELF



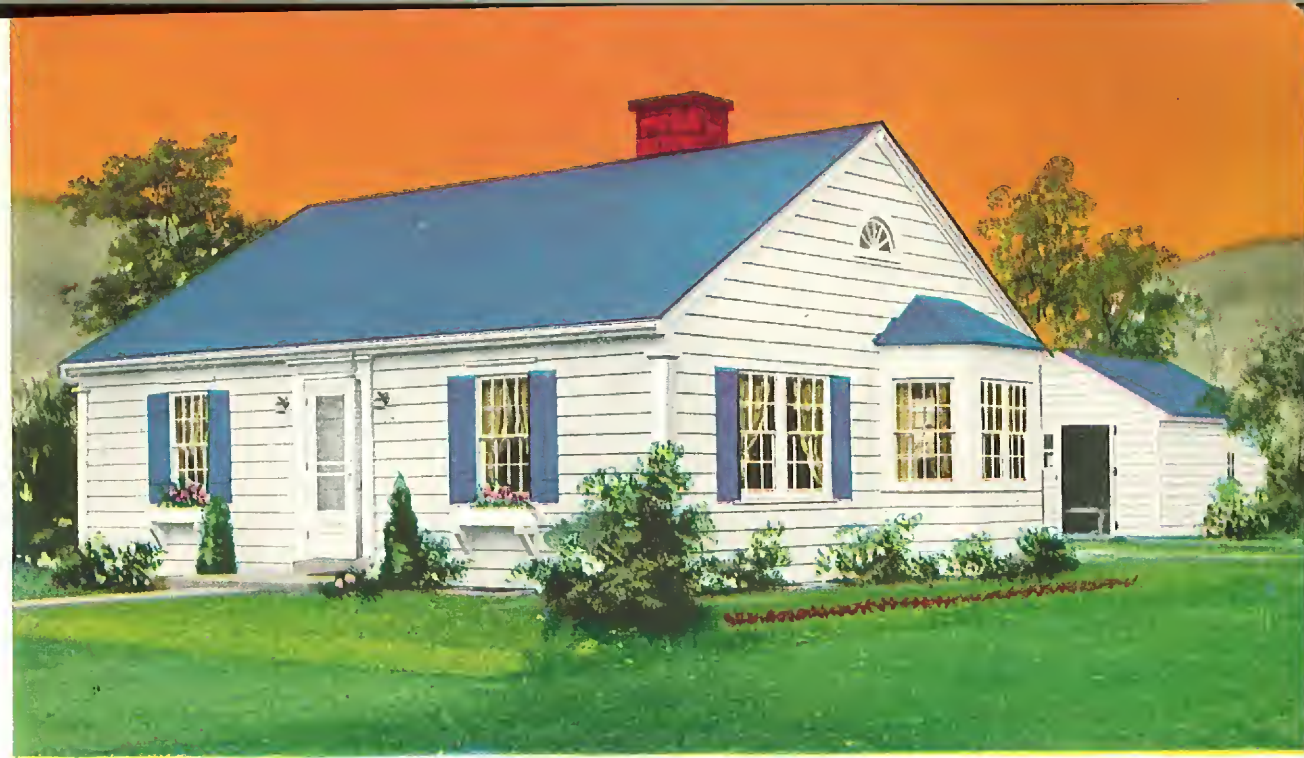
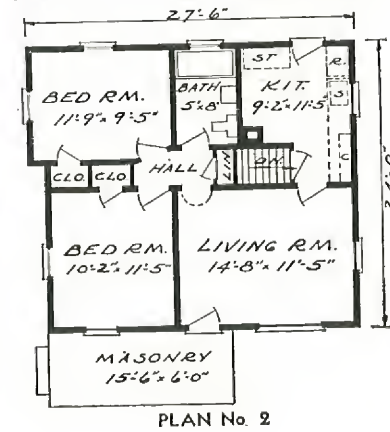
THE COLONIAL —

This lovely home follows the traditional New England feeling. It avoids decorative frills while abounding in vitality and form.

The floor plan at the right provides for a pleasant and convenient kitchen with adequate location for breakfast set or dining table. There is ample space for cabinets, stove and sink. Two bedrooms, bath and three closets complete the plan. Note attractive picture window.

Detail specifications will be gladly mailed on request. We pay the freight.

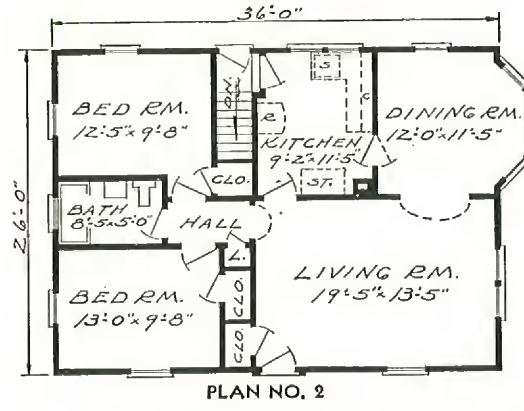
Glens Falls, N. Y.
Dear Sir:
I am writing in reference to my order for a Mount Vernon No. 3. The shipment arrived promptly and I am sincerely grateful for receiving the house at the time you hoped we would. The lumber is very good judged by the standards in this area. Our house has created quite a bit of interest and I wouldn't be surprised if you have more inquiries from this area. So far we are very well pleased.
W. N. Reeves



THE ROCKPORT — Extremely Popular — Price Given On Enclosed Price List

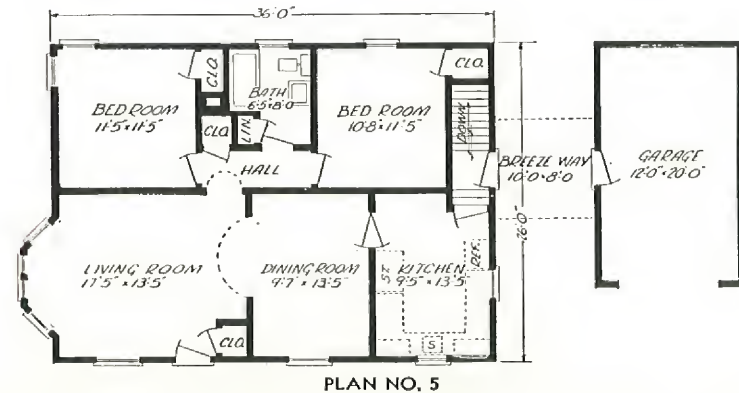
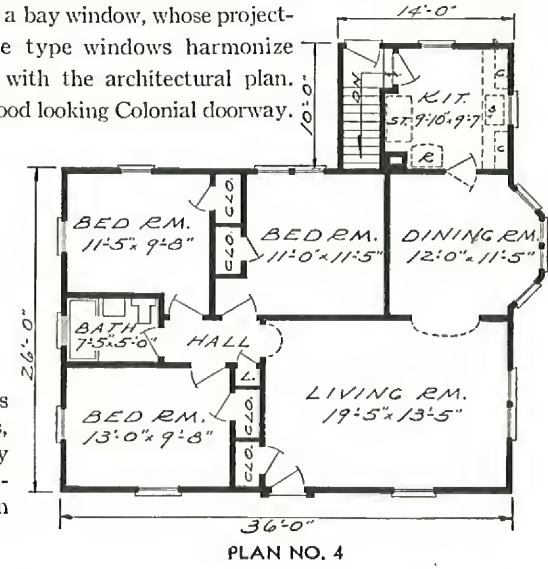
WE PAY THE FREIGHT

A touch of originality is given this wholesome design by the creation of a bay window, whose projecting cottage type windows harmonize splendidly with the architectural plan. Note the good looking Colonial doorway.



SEE PAGE 25

The Rockport is shown in three plans, each with special features to recommend it. Large living rooms are a desirable part of all plans, each has attractive dining rooms with bedrooms and baths efficiently designed. Trimmed shutters add balance to the windows and contrast to the color scheme. Another noteworthy feature is found in the pilasters at each corner of the house.



A study of Aladdin specifications will reward you with the knowledge that nowhere can be found quality to exceed that which is a part of Aladdin houses. Finer materials cannot be had for we have used the greatest care to seek out and use the very best. Write for detail specifications.

BREEZE WAY and GARAGE

The Plan 5 at the left portrays the ever popular breeze way and garage. This breeze way and single car garage are included in the price quoted for Plan 5. We can quote on a two-car garage instead of a one-car if desired.

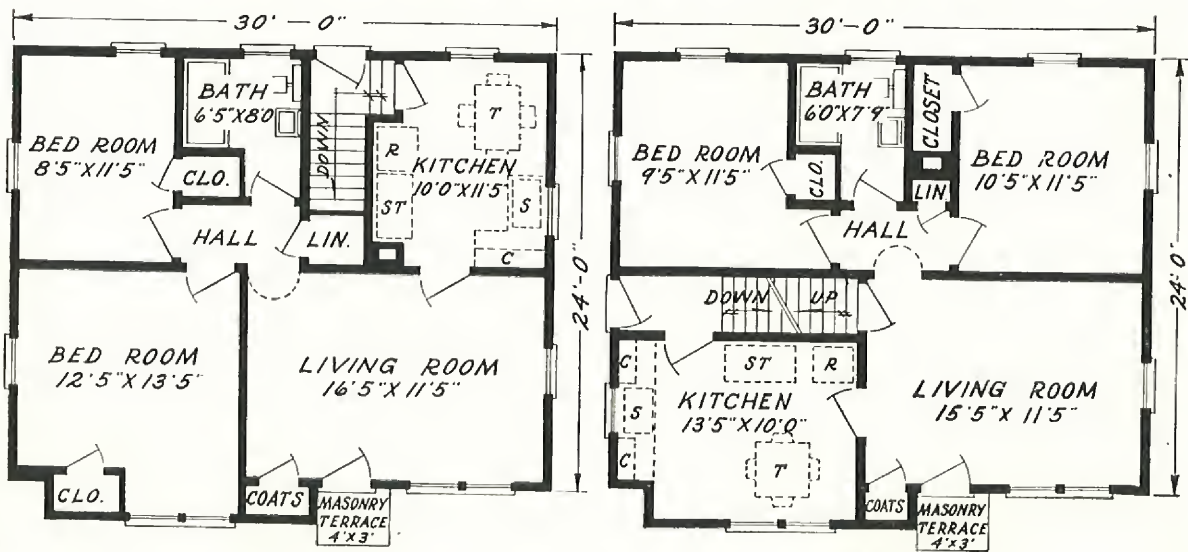


THE BROCKTON — Inexpensive — Charming — Price Given On Enclosed Price List **WE PAY THE FREIGHT**

The Brockton is one of the most popular small homes of the past year. A careful study of its interior arrangement reveals the last word in comfort, convenience and efficiency. Ample wall space and cross ventilation have been accomplished in every room by our designers. Note that it contains four closets. Two plans are presented, the

No. 3 Plan shows a cellar stairs where a basement is part of the owner's wishes. A stairway leads from living room to second floor in plan No. 4, which offers a world of added space. Our price does not include flooring or partitions for the second floor but these things can be added now or later if desired. Write us for detail specifications.

SOLD BY THE GOLDEN RULE FOR FORTY-THREE YEARS



PLAN No. 3

PLAN No. 4

UNTO THE THIRD GENERATION GRANDFATHER SON and GRANDSON

EACH STARTS HIS MARRIED LIFE IN HIS OWN NEW ALADDIN HOME

Aladdin home owners who built and have lived in their Aladdins for over thirty years here testify unsolicited to their satisfaction and happiness. AND their sons and their son's sons therefore come to Aladdin for satisfaction, safety and economy.

Dear Sirs: Grove City, Ohio
I am writing to request that you send me one of your catalogs. If you will look through your files you will note that in 1914 we purchased one of your houses, the "Georgia No. 2." We went to housekeeping in it when we were married Oct. 21, 1914. My brother, Laurence Hoddy, also purchased your "Stanhope." Now, one of my twin daughters and her husband are interested in building, too.
Very truly yours, Mrs. R. P. Dill

Sirs: Va. Beach, Va.
Will you please send a catalog of homes as soon as possible. Thanks.
Yours truly, Mrs. V. H. Barton
P.S. I built an Aladdin home in Oceana about 25 years ago and now my son is planning on building and would like to see your catalog.

Dear Sirs: Greencastle, Ind.
I am the lady who built an Aladdin cottage on Cape Cod and it weathered the hurricane. I would like one of your new catalogs.
Sincerely, Mrs. Jennie M. McLean
P.S. I have a son who might be interested in building in near future as he has just purchased 14 acres out of Ft. Wayne, Ind.

Gentlemen: Westwood, N. J.
Please send us your latest catalog and description of homes. We have been living in one of your homes for 25 years now and we expect to sell it and build a new one. Please rush and oblige.
Yours truly, John T. Isleib

Dear Sirs: Edmonds, Wash.
Please send me your latest catalog of your Read-Cut Homes, and also any other information you can give me on the possibilities of immediate delivery. As you may remember, my father purchased one of your homes in Juneau, Alaska about 15 years ago and it is still in good condition.
Truly yours, James Ramsay

Dear Sirs: Lakeland, Mich.
Would you please send me your catalog and prices of houses? I bought six cottages from you about 40 years ago. All are in fine shape yet.
A. Collum

Dear Sirs: Grabmere, N. H.
I did some business with you back in 1914 thru a third party who did the building while I furnished the funds, and now I am interested in a house for myself. So would like one of your up-to-date books on houses and plans, also prices.
Very respectfully, Joseph Griffin

Dear Sirs: Westboro, Mass.
Please send me your catalog at once. My Grandfather bought a Read-Cut home about 23 years ago and recommended us to you people.
C. S. Brown

Gentlemen: Utica, N. Y.
Some 27 years ago I bought my home "The Brentwood" and still live in it. Send me catalog on latest homes, also prices.
Yours sincerely, Ben D. Smith

Dear Sirs: Huntington, W. Va.
My father bought a house from you in 1913. If you are still in business would like to have a catalog on small houses.
Yours truly, H. B. Mackay

Gentlemen: West Concord, Mass.
Please send me a catalog of your houses. We bought 12 or 13 Aladdin Houses in 1912-15.
Yours truly, F. E. Marble

Gentlemen: Hendersonville, N. C.
Will you please forward me your new catalog? It might interest you to know that the home I purchased from you about 1913-14 is still in good condition and looks as good as ever.
Charles Feeldus

Gentlemen: Bridgeton, N. J.
We are writing to get information you could give us regarding the Aladdin Read-cut Houses.
My grandfather had one of these homes some years ago and was very pleased so we decided to try one.
Yours truly, Miss V. J. Keating

Dear Sirs: Culbertson, Montana
About 25 years ago we got a read-cut house from your company. It has been so satisfactory that when it has now come time to build us another place, we wanted another Aladdin house. We would like to have one of your catalogs.
Sincerely yours, Mrs. A. C. Petersen

Gentlemen: Ogdensburg, N. Y.
In 1925 my Dad purchased a home from you and in the passing years it has met every test. I have just returned from the Pacific and am interested in building a new home for my family. Would you kindly send me your catalog.
Respectfully yours, Francis G. Mason

Dear Sirs: Medicine Lodge, Kans.
As I am in the market for another house and having built one of your read-cut houses, I naturally turn to you for another as I think I saved at least 40% by so doing. Would like to have another set of building plans and prices from you so I can see what I can do about building another read-cut house. Thanking you for past favors, I am
Yours truly, Chas. L. Moomau

Dear Sirs: Claremont, N. H.
You will remember me back in 1915 when I bought your Georgia No. 2 and nestled it in a hillside where it sparkles like a jewel in the sunshine today. We have been very happy in the past 33 years in our Aladdin home and we are always proud to tell our friends where we got it. We now have three grown up children and five grandchildren to share our beautiful home whenever they care to visit us.
F. A. Billings

Gentlemen: Grand Island, N. Y.
Kindly mail me catalog with prices and delivery on your read-cut houses. I built one of your houses over 30 years ago. Did most of the erection myself and was quite pleased with the job, materials and all.
Yours truly, F. B. Fadum

Dear Sirs: Julian, Pa.
Back in 1912 I built two of your Aladdin homes and liked them very much. I am now going to build some more houses and wish to look over what you have available now. Please send me a catalogue.
M. E. Altimus, Sr.

Dear Sirs: Youngstown, Ohio
Please send me your illustrated catalog at an early date. For your information we constructed 57 of your houses in or about the year 1920.
Yours very truly, Robert M. Kelly Jr.

Dear Sirs: Sandwich, Ill.
My husband's grandfather bought a read-cut cottage from you. He lived in it until recently and was very well pleased with it. Now my husband and I would appreciate it if you would send us full and complete information on your read-cut houses.
Sincerely, Mrs. E. J. Cook II

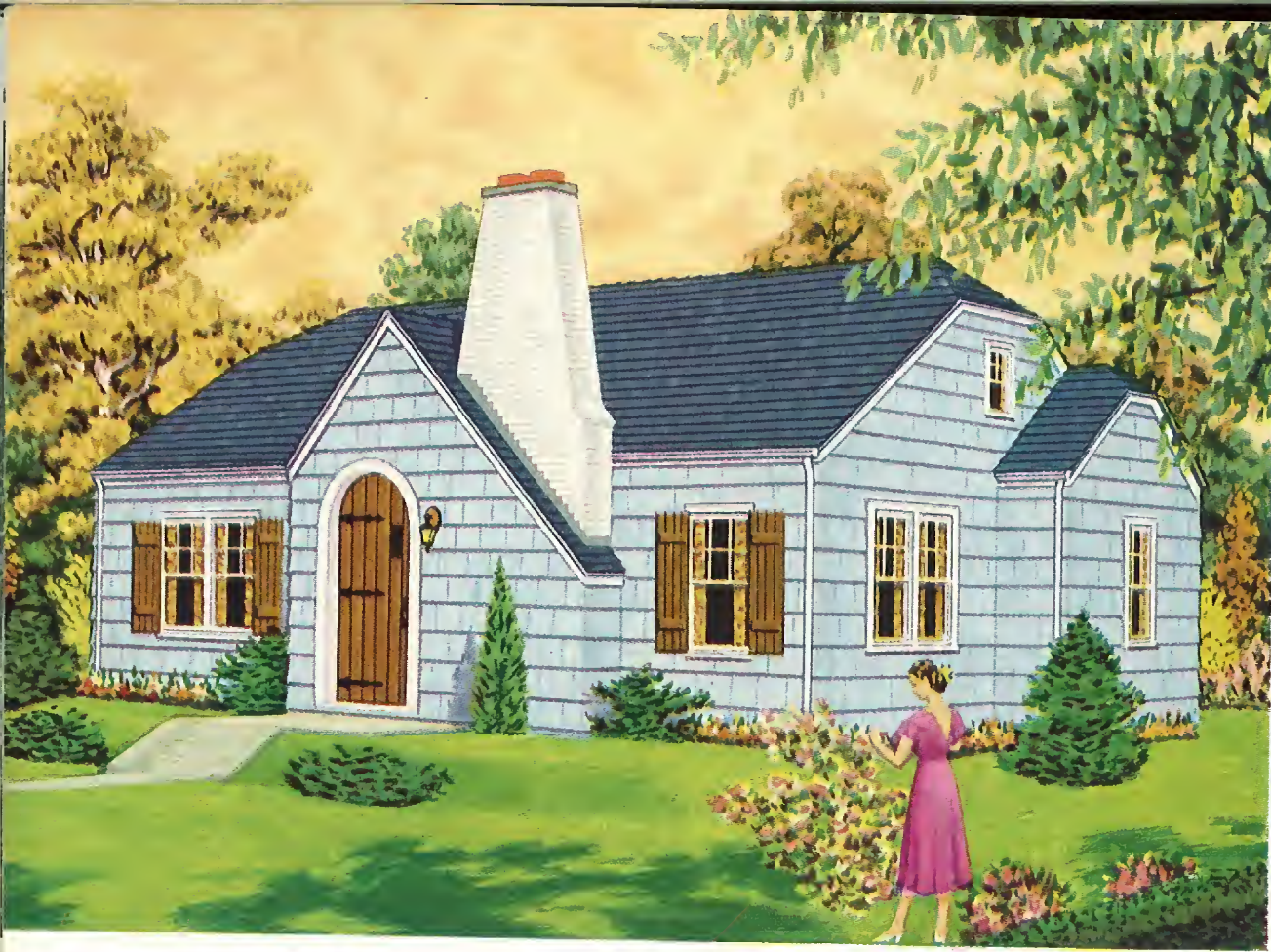
Dear Sirs: Baker, Mont.
I bought a Read-Cut house, the Yale, from you in 1914. Have been living in it ever since. It is a very nice house yet and I would like to buy another. Will you please send me your catalog?
Mrs. R. M. Larson

Dear Mr. Aladdin: Clinton, Mo.
I am writing you for catalog and price list on your read-cut homes. In 1919 I bought a house from you called the "Rochester" and I like it just fine and am well pleased with my home. I may leave my farm. If I do I may have to build me a home and I want it to be an Aladdin Home, too.
Yours sincerely, L. A. Bramell

Dear Aladdin People: Emmitsburg, Md.
I have a grandson who has been overseas for two years. Now he is home and married and would like to have a home so I am writing for a book.
I built an Aladdin home about 22 years ago. It was a "Hereford." It was a beautiful little home. I have been a widow now for 10 years. I hope to hear from you soon.
Yours truly, Mrs. David N. Myers

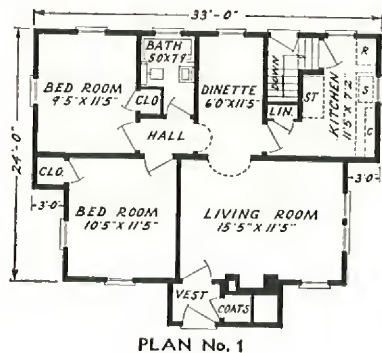
Dear Sirs: Mt. Dora, Florida
Will you kindly mail to me at once, one of your catalogs. I was a customer of yours in 1917, 1922 and I think 1927 at Brewster, N. Y. At present I am here in Florida (retired), and am looking for a small home.
Yours very truly, John W. Phillips

QUALITY ENDURES THROUGH THE YEARS

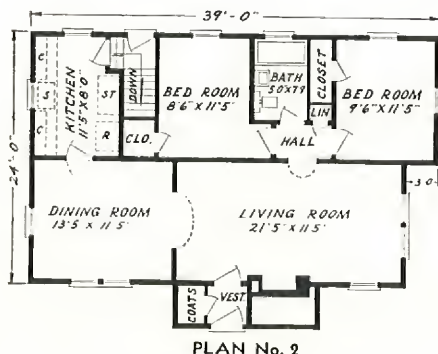


THE MADISON—A True American Home— Price Given On Enclosed Price List **WE PAY THE FREIGHT**

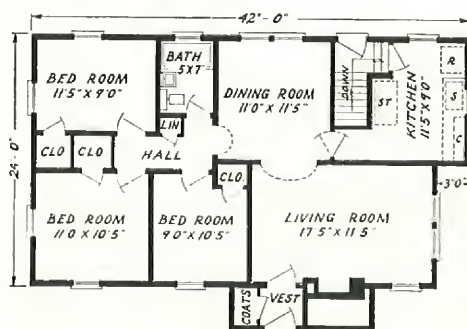
You will find this charming Madison home dotting the landscape in literally hundreds of communities. This design is typically American and its popularity is assured. The roof lines are especially interesting while the sturdy chimney breathes hospitality. On the exterior we illustrate rugged, artistic shingles of long-lived red cedar grooved and etched to resemble the antique hand-rived shakes of our forefathers. You have a choice of soft, pleasing colors. These shingles are laid at wide exposure for greatest beauty and economy and provide deep, filtering shadow lines resulting from the application of these shakes directly over an under-course of unstained shingles. They lend an element of distinction to this style of architecture. A double thickness and wide exposure gives maximum insulation—keeps your home warm in winter and cool in summer. This attractive shingle exterior is also shown for our Parkway on page 18 and can be furnished in place of wood siding for any homes shown in our catalog. Folding stairway can be installed in the hall of any one of these plans. Write us for detail specifications.



PLAN No. 1



PLAN No. 2



PLAN No. 3

—
SAVE
WASTE
—
SAVE
TIME
—
SAVE
MONEY
—

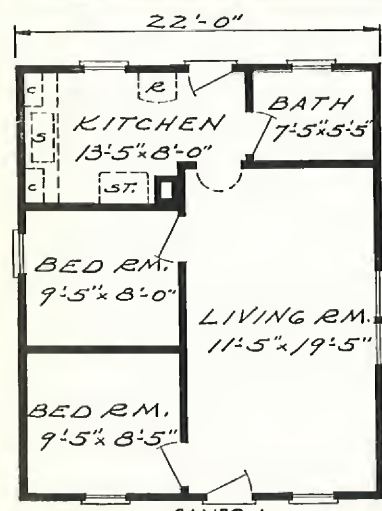
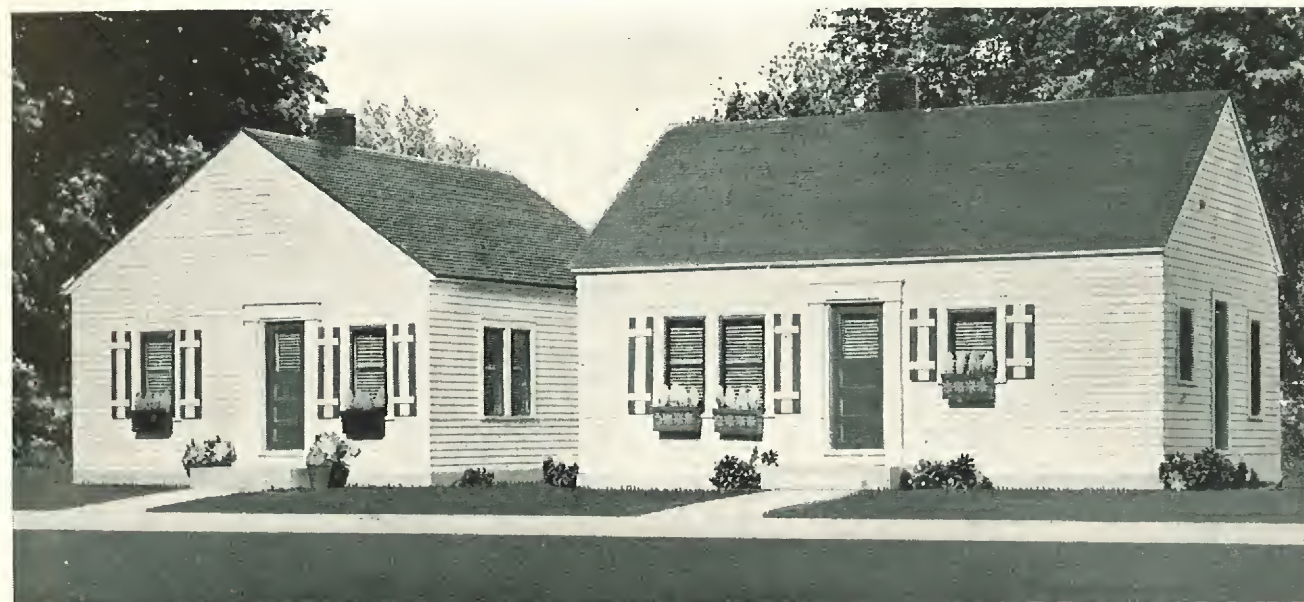
How to Beat the Building Game

ALADDIN'S NEW LOW COST LINE OF ECONOMY READI-CUT HOUSES

WILL HELP YOU **SAVE** 18% On Lumber Costs
30% On Labor Costs
And You Can Build It Yourself

SHELTER
COMFORT
LIVABLENESS

These attractive ECONOMY homes offer a chance to start home ownership on the very smallest savings. One of these compact plans is the starting point, conserving expense, inspiring thrift and saving rent. The materials entering into these small houses are identical in quality and value with the materials found in our larger homes. These ECONOMY homes shown on pages 27, 28 and 29 are priced in both single and double construction and are the only homes shown in the catalog priced in this manner. See page 29.

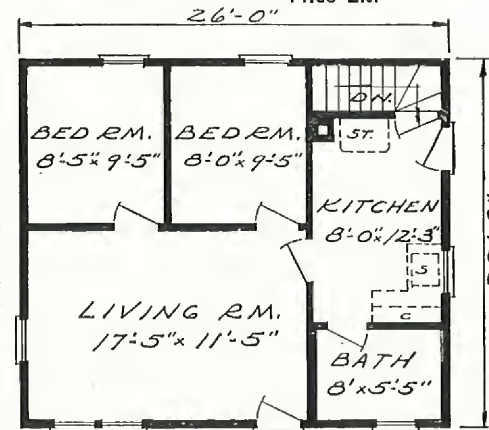


CAMEO A

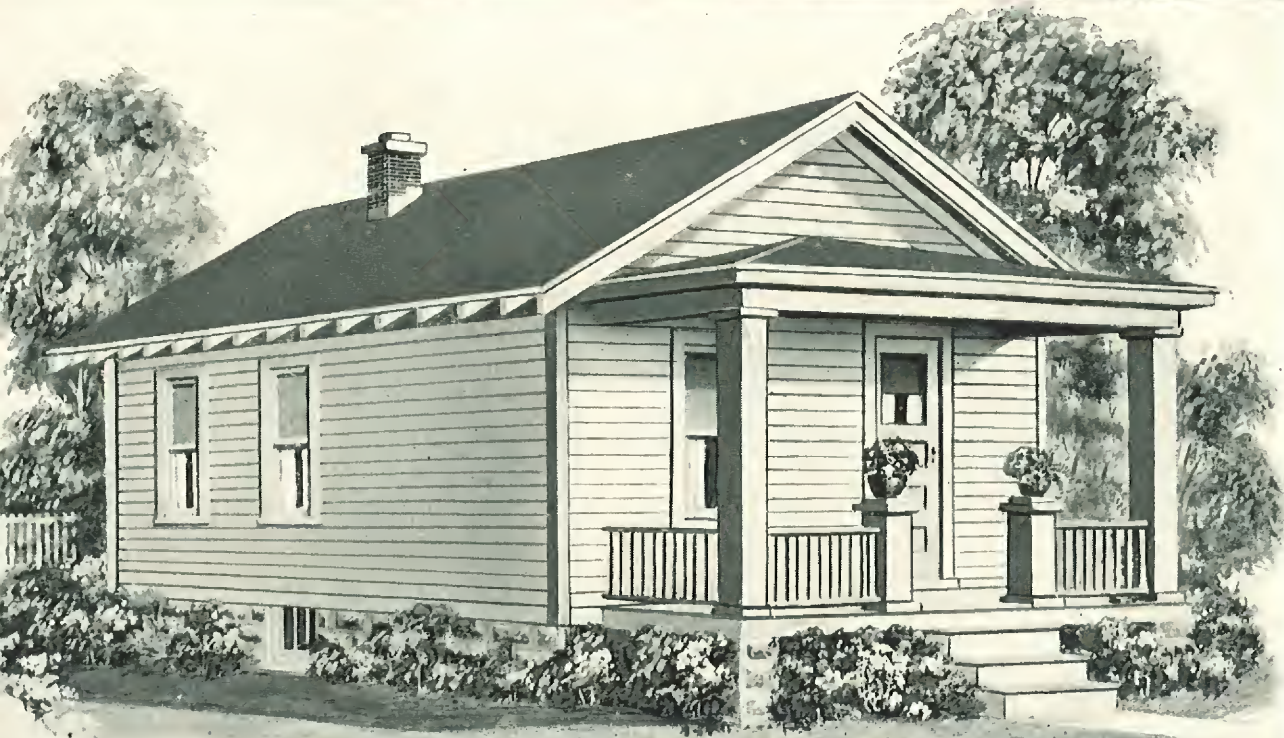
THE CAMEO

ECONOMY HOME — Price Given On Enclosed Price List

The modest cottage is the foundation of the American Republic. The American citizen is master of himself and his destinies when he steps across the threshold of his own home. The Cameo breaks thru the clouds of obstructions—high prices, middlemen's profits, architect's and contractor's fees—and opens up the big opportunity to start right now—to start with less than he thot possible—to start with modest savings. The Cameo is furnished in either size 18x26 or 22x26. See price list.

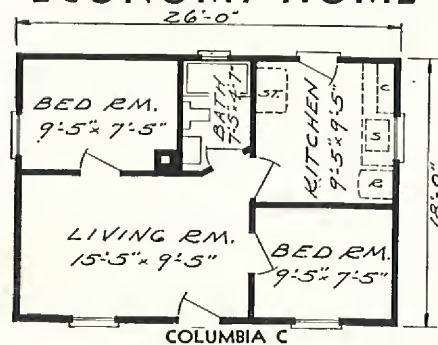


CAMEO B

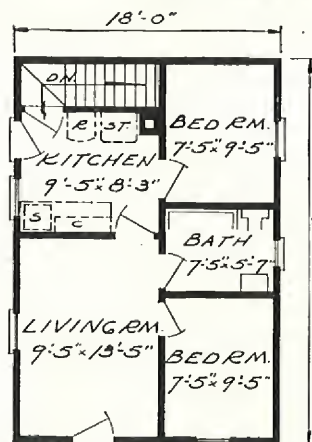


THE COLUMBIA—A LITTLE GEM

ECONOMY HOME



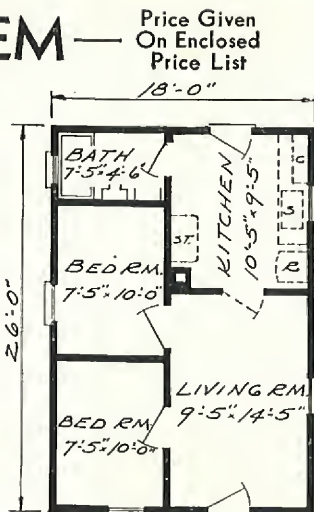
COLUMBIA C



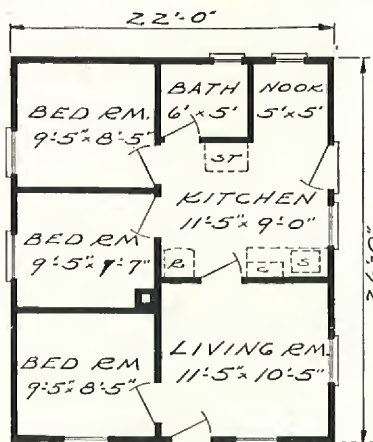
COLUMBIA D

FOUR PLANS TO CHOOSE FROM

Four plans are shown here for the Columbia in "Economy" construction. Three are size 18 x 26 feet and one is 22 x 26 feet. For each of them the porch is priced separately as shown on our enclosed price list. Among the four plans, one is sure to meet your requirements. The savings after building a small home will add more to your happiness than the luxury of a big home. Ask us for detailed Specifications. You will note that "Economy" homes are priced in both single and double construction. (See Page 29.) We pay the freight.



COLUMBIA E



COLUMBIA F

Price Given
On Enclosed
Price List

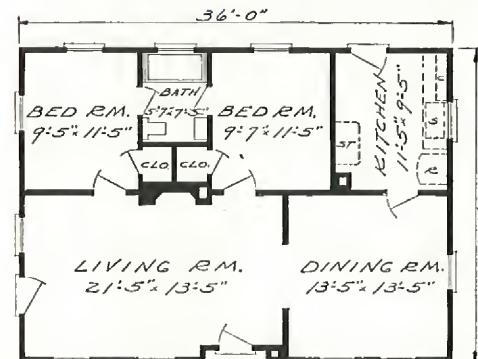
EASY TO BUILD—Over the past FORTY-THREE years of the Aladdin Company's history, tens of thousands of our customers have built their Aladdin homes with their own hands. In countless instances friends and relatives have pitched in to help, and to shorten the time of erection. The great advantage of being able to purchase the complete material from one source all of guaranteed high grade, and guaranteed to be sufficient to complete the house and at a known cost, has saved money, saved time and saved many troubles.

The ALADDIN Organization's Long Experience Means the Perfection of Machine Production

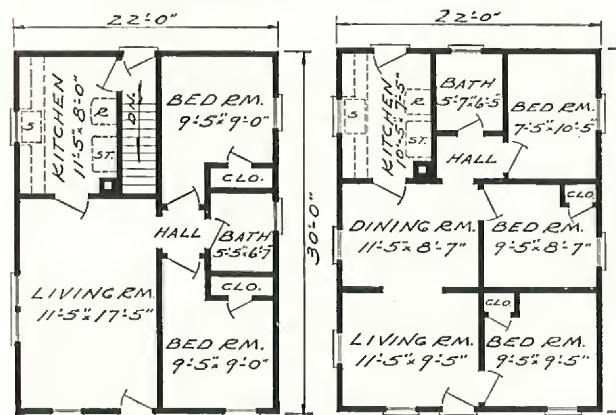


THE POTOMAC—ECONOMY

Price Given
On Enclosed
Price List



POTOMAC NO. 1



POTOMAC NO. 2

POTOMAC NO. 3

Refinement of detail and true simplicity distinguish this well-proportioned home. It satisfies every wish in beauty, comfort, convenience, and too, remarkable value. Either Plan Two or Plan Three of the Potomac can be turned to face the street the long way of the house by transposing the front door. The pergola type porch roof harmonizes with the exposed rafter ends. This porch is quoted as an extra in our price list attached. Write for our "Economy" specifications for the Potomac.

BUILD IT YOURSELF

The Colonial atmosphere of the Potomac is very appealing to the home owner for it bespeaks hospitality, old-fashioned simplicity and true goodness. From its clean, straight timbers to its beautifully machined siding and handsomely grained woodwork, it represents the very best in materials. Five large rooms and bath are shown in the Plan One—truly a home to be proud of. The Potomac has been one of our most popular houses for many years and has always given its owners highest satisfaction.

SINGLE CONSTRUCTION includes everything shown in the specifications except sheathing lumber and building paper under the siding on the outside walls and except subfloor lumber and building paper under the finish floors. See price list for prices on "Economy Homes" shown on pages 27, 28 and 29.

DOUBLE CONSTRUCTION includes everything shown in the specifications. You will note we provide inch wall sheathing and building paper underneath the bevel siding and inch subfloor sheathing and building paper underneath the finish floor. See price list. Porches are priced separately for "Economy Homes" shown on pages 28 and 29.

ALADDIN Enters FORTY-THIRD Year of Manufacturing READI-CUT HOMES



The ALADDIN Organization's Long Experience Means the Perfection of Machine Production, Saving of Labor on the Job and Elimination of Waste of Materials.

ALADDIN SYSTEM IS BUILT ON THIS PRINCIPLE Modern power-driven machines can do BETTER work at a lower cost than hand labor. Then every bit of work that CAN be done by machine SHOULD be so done. The steel worker with a little hack-saw trying to cut and fit the steel girders of the modern skyscrapers should be no more out of place than the modern carpenter cutting sills, joists, and rafters. The skyscraper framework is cut to fit by machines in the steel mills, marked and numbered ready for erection.

The lumber in the Aladdin houses is cut to fit by machines in the Aladdin mills, marked and numbered ready for erection. The steel system is over sixty years old—the Aladdin system over forty years old.

An Aladdin Read-cut Home saves you from twenty to thirty percent in your labor bill because the carpenter does not have to spend his time working out the construction details, and cut all the lumber by hand. Our complete drawings give him construction details that have been proven the best over a period of over forty years. When building the Aladdin Way, you save all the time used by a carpenter

give him construction details that have been proven the best over a period of over forty years. When building the Aladdin Way, you save all the time used by a carpenter

in measuring, cutting, trying and fitting, because all of this work has been done in our factory by modern machines. A machine cut Aladdin home is better built, stronger and more substantial and it will give you a lifetime of satisfaction.

Standard size materials save waste. We save you eighteen percent in waste because our homes are designed to use standard sizes and lengths. Also all mill work, doors, windows, etc., are manufactured to standard sizes thus making it possible for us to produce them in tremendous quantities. Naturally with the large production and modern factory manufacturing methods, we effect a saving for you on all of the items entering into the construction of your home. All lumber used in Aladdin homes is standard size as adopted by The National Association of Lumber Manufacturers.

Volume the Magic Word The first rule in the catalogue of manufacturing is: To lower the cost, divide the several parts of the labor employed into simple, specialized, mechanical operations.

But this won't work without the mystic word. And that word is "VOLUME!"

Your local contractor may build ten houses a year. Could he afford to invest \$50,000 in machinery to lower his cost on the ten houses twenty per cent?

"Volume" of business makes possible the highly specialized machinery found throughout the Aladdin mills; makes practical the investment of \$10,000 in a single machine which will lower the cost \$5.00 on a house!

But that \$5.00 is multiplied twenty to thirty times on each house and it saves every buyer of an Aladdin from \$100 to \$200 on construction cost alone.

Quantity Buying Because of the tremendous amount of building materials we purchase each year, we are in a position to buy at the lowest possible prices. The large quantity purchased makes it possible for us to obtain prices far lower than any company or individual who has a demand for only a few homes each year. When the finest grades of materials are used, you are assured of the highest kind of an investment in your home. We never, in any case, sacrifice quality for price or profit. Aladdin Certified Lumber is guaranteed to be satisfactory.



ONE MAN EQUALS Six CARPENTERS

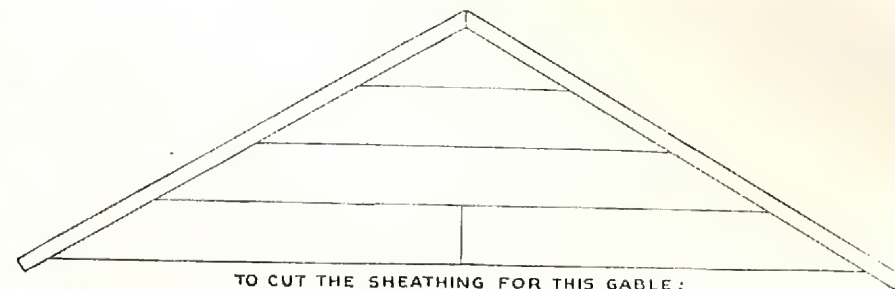


Showing Simple Plan of Laying Out Materials

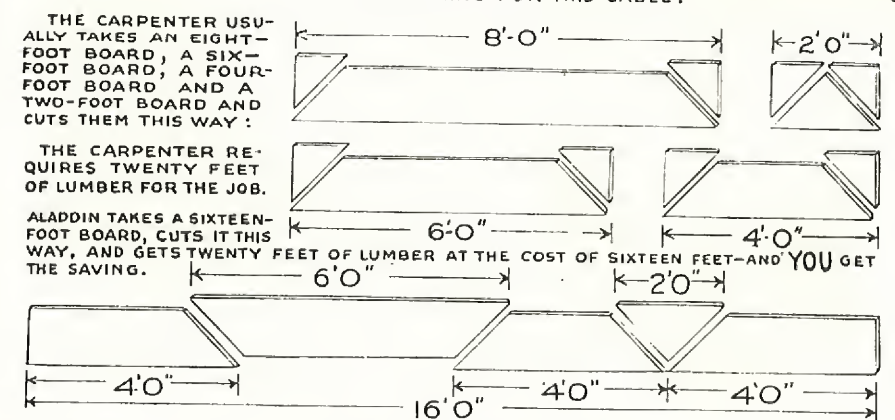
One of the most amusing remarks made is that the builder of an Aladdin home will lose as much time hunting out his material and finding the right pieces as he will save by the Read-cut System. Any thought about time lost in hunting for pieces will be found untrue when you see the simple system of laying out materials given in our Instruction Book with every home.

HOW THE ALADDIN READI-CUT SYSTEM SAVES YOU MONEY BY GETTING 20 FT. OF LUMBER FROM A 16 FT. BOARD

An Aladdin Read-cut Home saves you from twenty to thirty percent in your labor bill because the carpenter does not have to spend his time working out the construction details, and cut all the lumber by hand. Our complete drawings give him construction details that have been proven the best over a period of forty-three years.



TO CUT THE SHEATHING FOR THIS GABLE:



REMEMBER THE LUMBER THAT'S WASTED COSTS JUST AS MUCH AS THE LUMBER THAT'S USED. ALADDIN SAVES 18% LUMBER WASTE.

Efficient Planning Saves Your Money

Waste can and does influence the cost of everything you buy. This is especially true of home building.

Waste consumes your dollars and gives nothing in return. Aladdin proves to you that the Read-cut System will save about \$18 out of each \$100 on your lumber costs.

Aladdin proves to you that the Read-cut System will save you about \$30 out of each \$100 labor cost. A study of the above drawing will give you a very clear understanding of the amazing economies of the Aladdin Read-cut System and what it means to you in dollar saving.

ALADDIN System Gives Control Over Your Costs

Why shouldn't you save these profits, like thousands of other home-builders have been doing through The Aladdin Company for the past forty-three years?

You KNOW in advance what the materials for your house will cost you. You KNOW there will be no shortage of materials—nothing forgotten. You KNOW you will not be paying for more materials than will be used and that you will save the price of all "short ends" that are wasted by the old system.

You KNOW you will receive high grade lumber, millwork, hardware—Aladdin CERTIFIED materials. You KNOW everything will be on hand when you want it—all in one shipment and all guaranteed by Aladdin. And you KNOW in advance what your house will look like and what it will be in every way.

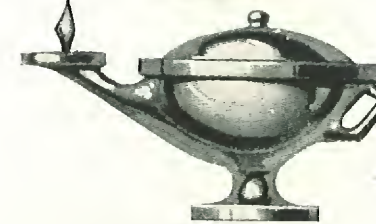
KNOWING gives you control—mastery of your money, of materials, of labor and of RESULTS.

Quick Shipment

We can ship any regular home in this catalog within about eight days after we receive your order. The average time required for delivery after leaving the factory is from three to five days. We prefer to be given a little more time if convenient to you. All homes are shipped complete at one time in a sealed box car from our mill.

ALADDIN Service

You receive a scientifically designed home; a scientifically manufactured home; the benefit of buying power, thousands of times greater than your own. You receive the safeguards of our experience. You are guarded against costly extras. You have our help in keeping costs down. You save many days' time. You save costly waste. You receive everything complete for your home in one shipment. You know exactly what your house will look like when completed. You save all architectural fees. You are assured prompt shipment and quick erection. You receive a bona-fide guarantee of complete satisfaction.



AWARDS OF QUALITY

ALADDIN ORIGINATED THE READI-CUT SYSTEM OF HOME BUILDING



O. E. SOVEREIGN, Gen. Mgr.

THE ALADDIN COMPANY was founded forty-three years ago by W. J. Sovereign and O. E. Sovereign who perfected and established the First Read-cut System of Home Building in the world.

Today, as in the past, the company is still managed and owned by these two brothers. Customers of forty-three years ago may write to The Aladdin Company today and know that the management is unchanged, and that they are writing to and dealing with old friends.

Their vast experience in the wants and needs of homebuilders, in the choice of the best materials for their use, in the preparation and manufacture of the lumber is of tremendous value to every customer of Aladdin. The Sovereign Brothers are ready to give you their personal time and assistance to guard you from the mistakes so often made by inexperienced homebuilders. This service costs you not one cent extra. It is included as a part of every Aladdin transaction.

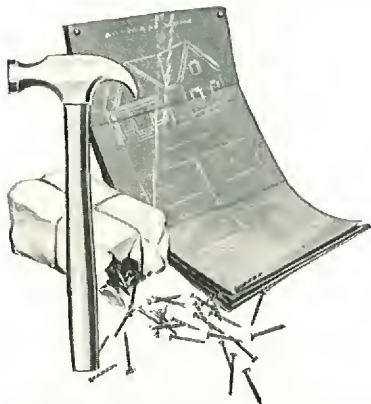
The Read-cut System as originated by The Aladdin Company has been approved by the United States Government, the Michigan State

Government, and hundreds of big corporations by large purchases of Aladdin Houses. This company manufactured and shipped the first complete read-cut home built in the world.



W. J. SOVEREIGN, President

What You Get When You Buy An ALADDIN House



A careful reading of the following will give you a clear idea of the completeness of materials and equipment which are included in the price of Aladdin Houses.

You also receive our forty-three years of home building experience to guard you against mistakes of any kind.

It has taught us the best construction methods, the best materials to use, the best way to prepare the building plans so every step of erection can be followed even though you have had no previous experience in building. And to complete our service to you, we guarantee that you will receive sufficient of all materials to complete your home according to the plans and specifications.

Read the Following Carefully:

You Receive:

Foundation wall plates cut to fit.
Foundation Sills cut to fit.
Floor Joists cut to fit.
Floor Joist Bridging cut to fit.
Sub Floor Sheathing cut to fit.
Wall Studding cut to fit.
Wall Sheathing cut to fit.
Partition Studding cut to fit.
Ceiling Joists cut to fit.
Rafters cut to fit.
Roof Sheathing cut to fit.
Roof Ceiling cut to fit.
Water Proof Building paper between sub and finished floor.
Finish Floor Tongued and Grooved.
Water Proof Building paper between wall sheathing and siding.

Siding squared ready to fit against casings and outside finish.
Cedar shingles or asbestos shingles, instead of siding if preferred.
Outside finishing lumber cut ready for fitting.
Crown, bed, cove and quarter round moldings.
Water table and drip caps for exterior.
Window frames complete with inside and outside trim.
Glass in window sash ready to hang.
Window and door trim.
Door frames complete with inside and outside trim.
Doors—Interior and Exterior.

Baseboard and base shoe for all rooms.
For two story houses stairways, treads, risers, stringers, newel posts, balusters, molding, etc.—boxed ready for erection.
Cellar Stairs where shown—all materials cut to fit.
Nails of proper size.
Lock sets.
Door Hinges.
Double acting door set.
Metal Door Bumpers.
All window hardware complete.
Slate surfaced asphalt shingles.
Valley, hip and ridge flashings as needed.
Paint—three coats. Finish coats any colors desired.

Tarrentine, Putty and Oil.
Interior stains—one coat—Floor and Interior Woodwork.
Interior Varnish—two coats—Floor and Interior Woodwork.
Porch joist, porch flooring, steps, columns, balusters and porch roof sheathing and ceiling cut to fit.
Foundation plans and foundation instructions.
Complete set detailed blueprints showing every step of erection.
Copyrighted book of printed instructions and illustrations describing every step in erecting and completing the house.

THE ALADDIN COMPANY

FOUNDED 1906

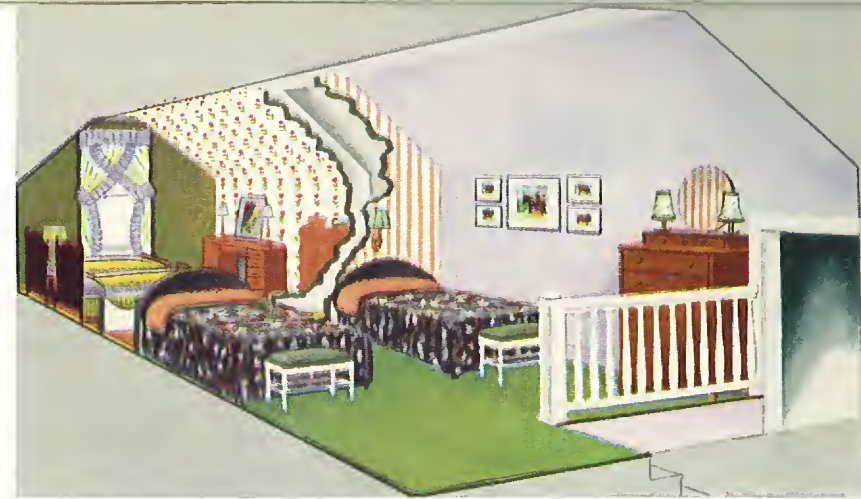
By W. J. and O. E. SOVEREIGN

HOME OFFICE and MILLS: BAY CITY, MICHIGAN

CATALOGUE No. 54

HOMES THAT GROW

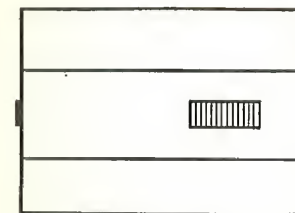
The average total floor space of the one-story homes in this book is approximately 800 square feet. With a few exceptions the plans show two bedrooms. While a two bedroom plan may meet your requirements at the time of building your new home, the future may develop the need of additional rooms—expanding family or guest rooms. To plan ahead now to meet such contingencies, we show on this page some interesting suggestions.



PLAN No. 1



PLAN No. 2

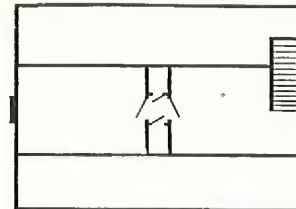
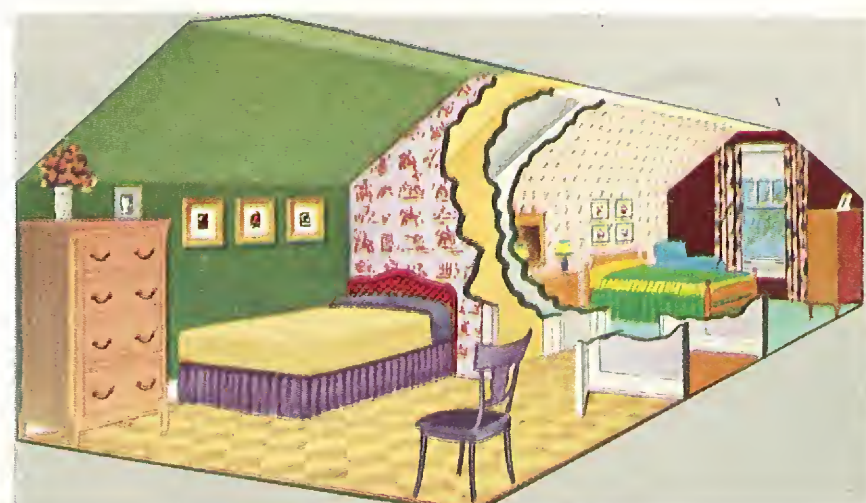
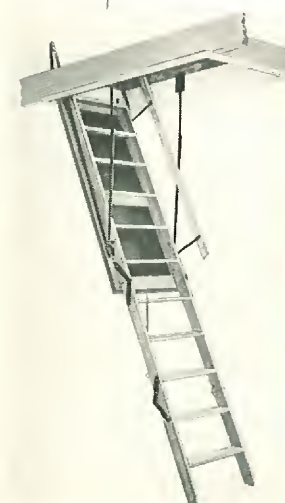


PLAN No. 2

A few of our plans show a permanent stairway to second floor but no materials are included to finish off the second floor, unless the floor plan, and specifications state the second floor materials are included. In most homes valuable attic space is available for future expansion.

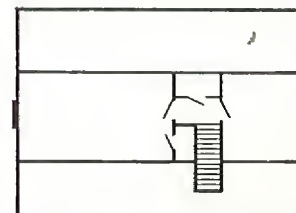
OUR FOLDING STAIRWAY

Where no stairway is shown in the floor plan it is always possible to install a folding stairway. usually in the ceiling of the hall. The stairway can be lowered or raised with almost finger pressure. When closed, the space is covered with a neat panel. The frame opening in the ceiling is about 26" x 54".



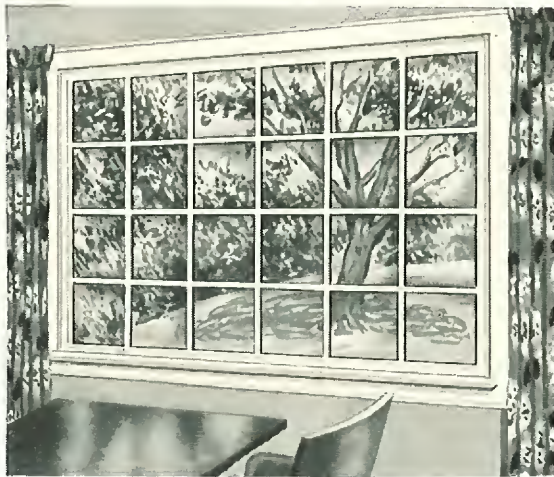
PLAN No. 1

The three suggestions will add another 300 or 400 square feet of living space to your home. You can include in your order (if a permanent stair to the second floor is not included) a folding stairway as pictured on this page. Price will be given on request. When installing this folding stairway you are spared the present cost of finishing off the second-story rooms but are in shape to expand at a later time at minimum cost.

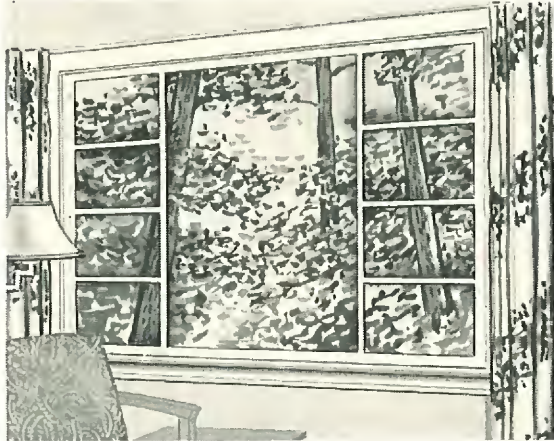


PLAN No. 3 BELOW

Optional Materials and Equipment



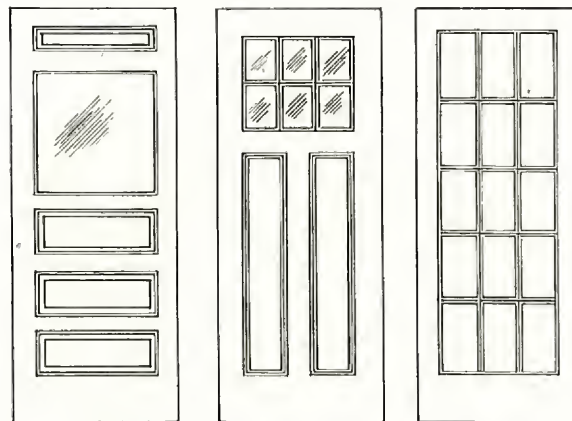
PICTURE WINDOW STYLE 1



PICTURE WINDOW STYLE 2

The recent vogue of installing picture windows is both attractive and sensible. Practical, because this type of window enhances the attractiveness of any home and practical, because of the better light in the room where it is placed. We are prepared to furnish either of the types shown above in place of any single or double (mullion) window. Two sizes are available in either No. 1 or No. 2 design—5 ft. 4 in. x 4 ft. 6 in. and 7 ft. x 4 ft. 6 in. Write for prices.

EXTERIOR DOORS Style No. 8 is provided at the rear. For the front we list in specifications the Style Number of door provided with your home.



EXTERIOR DOORS

Shown at right is the type of Door Canopy which is both attractive and serviceable and can be applied to the entrance of any of our houses. It offers excellent protection from sun, rain, sleet and ice. Write for prices.



SHINGLES Instead of wood siding for the outside walls we can furnish artistic shingles of long-lived red cedar grooved and etched to resemble the antique shakes as illustrated on page 18 and also on page 26. The shingles are laid at a wide exposure with a double thickness at the butt. Write us for further details.

ARCHES Square cased openings or materials to build a curved plastered arch can be furnished in any of our homes where arch openings are shown in the floor plan.

SCREEN, STORM SASH We can furnish window screens, storm sash and combination storm and screen doors for any or all outside openings. The distinctive ornamental screen door shown on the Newport may be had with any Aladdin home. Write for prices mentioning the home selected.

CELLAR WINDOWS For a foundation wall opening approximately 3 ft. wide and 2 ft. high we can furnish a complete unit with frame, glazed sash and hardware. It is not necessary that the frames be shipped before the house as all you have to do is leave opening 34"x24" and the complete assembled unit can be set in the foundation wall.

OAK FLOORING Oak flooring can be furnished in any or all rooms of any Aladdin home. If wanted, write us for prices and state in what rooms you will wish to use the oak flooring.

INSULATION Attic insulation can be furnished with any Aladdin home. It fits easily between your ceiling joist and can be installed at a very low cost. Write us for prices.

KITCHEN CABINETS Kitchen cabinets can be furnished in accordance with catalog floor plan layouts. Attractive kitchen arrangements can be provided for any Aladdin home you decide on. Write for prices.

CELLAR STAIR ADDITION

If the Aladdin home you select is not provided with a cellar stair, we can furnish the stair addition 7' x 6' in size. It can be added to the home and will include steps to both the kitchen and basement with grade entrance. Write for price.

SUMMER COTTAGES

We have prepared a special pamphlet illustrating in colors our line of Aladdin Summer Cottages. This will be sent you upon request and without obligation. In writing for this, please state if you are in possession of our regular catalog.

ALADDIN BUILDING ESTIMATES

EXCAVATION — Under the heading, "3' Excavation," we give the number of cubic yards of earth necessary to remove in an excavation of that depth. One-third of that amount will be the number of cubic yards in one foot of excavation. If your excavation will be less than three feet or more than three feet you can multiply the number of cubic yards for one foot of excavation by the depth you intend excavating and the resulting figure will give you the number of cubic yards to remove in your particular case. Our figures are based on making the excavation one foot larger each way than the size of the foundation.

FOUNDATIONS — Under the heading, "16" Blocks," we give you the number of concrete blocks of that size necessary for a foundation wall 10 Blocks high. As concrete blocks are 8 inches high, a 10 block

NAME OF HOME	Cu. Yds. Excavation 3' Deep	16" Blocks 10 Blocks High	Cu. Yds. Poured Concrete 8" Wall	Sq. Yds. Plastering Surface
Birchwood No. 4	111	930	21	426
Birchwood No. 7	90	840	19	376
Brentwood "A"	103	885	20	416
Brentwood "C"	123	980	22	450
Brewster No. 2-4	108	930	22	439
Bristol "A"- "B"	123	990	23	455
Brockton No. 3-4	96	825	19	353
Cameo "A"- "B"	75	720	17	208
Colonial No. 2	83	758	18	312
Columbia "C"	62	660	15	208
Columbia "D"	62	660	15	236
Columbia "E"	62	660	15	212
Columbia "F"	67	720	16	215
Concord	106	1020	23	624
Dresden "C"- "D"	100	840	19	382
Ferndale No. 1	125	1050	23	507
Ferndale No. 2	135	1080	24	545
Gables "A"	100	900	20	378
Gables "C"	139	1180	27	505
Hamilton No. 1	106	1020	23	777
Hamilton No. 2	92	855	19	710
Madison No. 1	98	915	20	401
Madison No. 2	115	1005	22	439
Madison No. 3	118	1050	23	491
Mt. Vernon No. 2	80	735	18	314
Mt. Vernon No. 3	93	795	19	350
Mt. Vernon No. 4	80	735	17	324
Newport No. 1	122	960	22	424
Newport No. 2	121	955	22	420
Newport No. 3	98	840	20	382
Newport No. 4-5	81	750	17	326
Norfolk No. 1	100	825	19	387
Norfolk No. 3	25	870	19	387
Palm Springs No. 1	183	1430	33	640
Palm Springs No. 2	155	1220	28	560
Parkway No. 1	147	1050	24	535
Parkway No. 2	118	930	21	412
Pilgrim No. 2-5	153	1020	23	500
Pilgrim No. 4	110	935	22	423
Potomac No. 1	118	930	22	360
Potomac No. 2	85	780	18	270
Potomac No. 3	85	780	18	280
Rockport No. 2	121	960	21	425
Rockport No. 4	136	1065	25	500
Rockport No. 5	107	1021	24	482
Rosewood No. 1-2	134	1050	24	464
Rosewood No. 3	113	960	22	446
Shelburne No. 1	126	975	23	714
Shelburne No. 2	126	975	23	680
Summerset	95	810	20	612
Sunshine "B"	98	825	20	400
Sunshine "D"	85	765	18	330
Sunshine "E"	104	855	20	414
Vassar No. 2	103	885	20	586
Winston No. 1	115	945	22	398
Winston No. 5	119	945	22	420

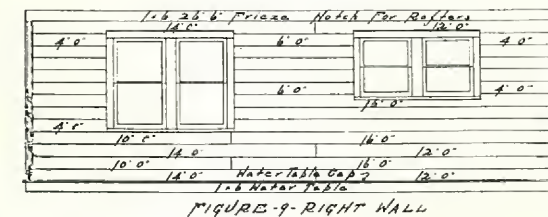
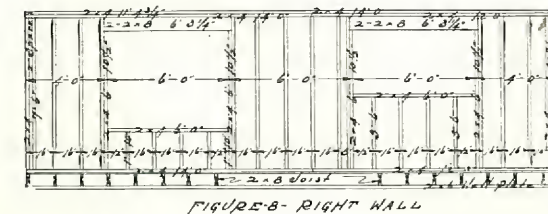
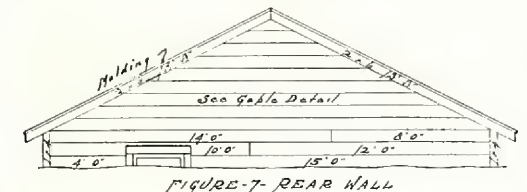
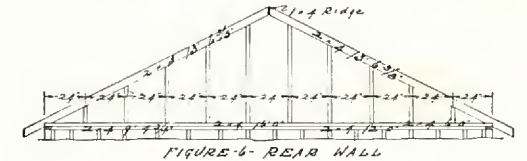
wall is approximately 7 feet high. If a wall of different height is built divide the quantities by ten and multiply by the number of blocks high your wall is to be built. If a cellar is not being built under your home, a seven foot wall will not be required. It will only be necessary to carry your foundation down below the frost line. This is seldom more than 2 to 3 feet below ground or grade line and in many localities is considerably less. Should you use 24" blocks the quantity of blocks required will be one-third less. If a poured concrete foundation wall is to be used, you will find below the number of cubic yards of poured concrete required for each home. As the mix differs in every locality, your local mason dealer can give you the quantities of cement, sand and gravel required for this type of foundation and also quote you prices on the necessary materials for the number of cubic yards of poured concrete listed. The figures are based on a wall 8" thick, not including footings.

PLASTERING SURFACE — Under this heading we give you the number of square yards of surface in the home to be lathed and plastered, and with all openings included.

CHIMNEYS — Chimneys and fireplaces are sometimes shown on our plans to suggest a practical location. Since we do not cut the openings in our homes for them, you can change the location or omit them entirely if preferred. The amount of material required for chimneys is as follows:

One 8" x 8" flue chimney, 30 bricks to each foot of height.
Two 8" x 8" flue chimney, 50 bricks to each foot of height.
One 8" x 12" flue chimney, 35 bricks to each foot of height.
Two 8" x 12" flue chimney, 60 bricks to each foot of height.
For mortar allow 1/2 bbl. cement and 1/2 cu. yd. sand for each 1000 bricks.

It's Easy to Follow ALADDIN Blueprints



Masonry and Fireplaces—Chimneys can be located anywhere in the house you like for we do not cut our materials for these openings. If you do not want the fireplace which may be shown in the photograph and floor plan arrangement, you need not build it. We furnish you a foundation plan which shows you exactly how to proceed to build your foundation.

Plans Can Be Reversed—Any Aladdin Plan can be furnished reversed. A reversed plan would place all of the rooms on the opposite side of the home from that shown in the catalog plan.

Room Sizes—Indicated on catalog floor plans are net dimensions between plastered walls. This system gives accurate information for proper placement of furniture and other equipment.

Special Plans—The success of the Aladdin System depends to a large extent on the reasonable standardization of designs and material sizes. For this reason we find it impractical to quote on special plans of any kind.

Here we have shown in greatly reduced size, a few figures taken from a set of Aladdin Ready-cut House Plans. They show the size, length and position of every piece of material entering into the construction of the home. All materials that need mitering are mitered to the exact length and all you have to do is nail the materials in place.

VISIT US You are cordially invited to visit us at our Bay City offices. We will be proud to show you thru the Aladdin mills where you can inspect our lumber and see our houses being manufactured. Can also show you some of the many Aladdin Homes built in Bay City.